



Zetland, NSW

605/28 Ebsworth Street

1 BED **1** BATH



Inner City 1 Bedroom Apartment with Study Room in Green Square, Zetland

Welcome to Green Square, where city meets community living.

Situated just moments from charming cafes, convenient public transportation including Green Square station, and exclusive boutique shops, 'Ebsworth' offers unparalleled accessibility. Residents will delight in the array of acclaimed amenities nearby, including the state-of-the-art Gunyama Aquatic and Recreation Centre and the Green Square Library.

This 66sqm, 6th floor apartment features:

- Bright well appointed bedroom with generous built-in wardrobe
- Separate study room, perfect for a home office or nursery

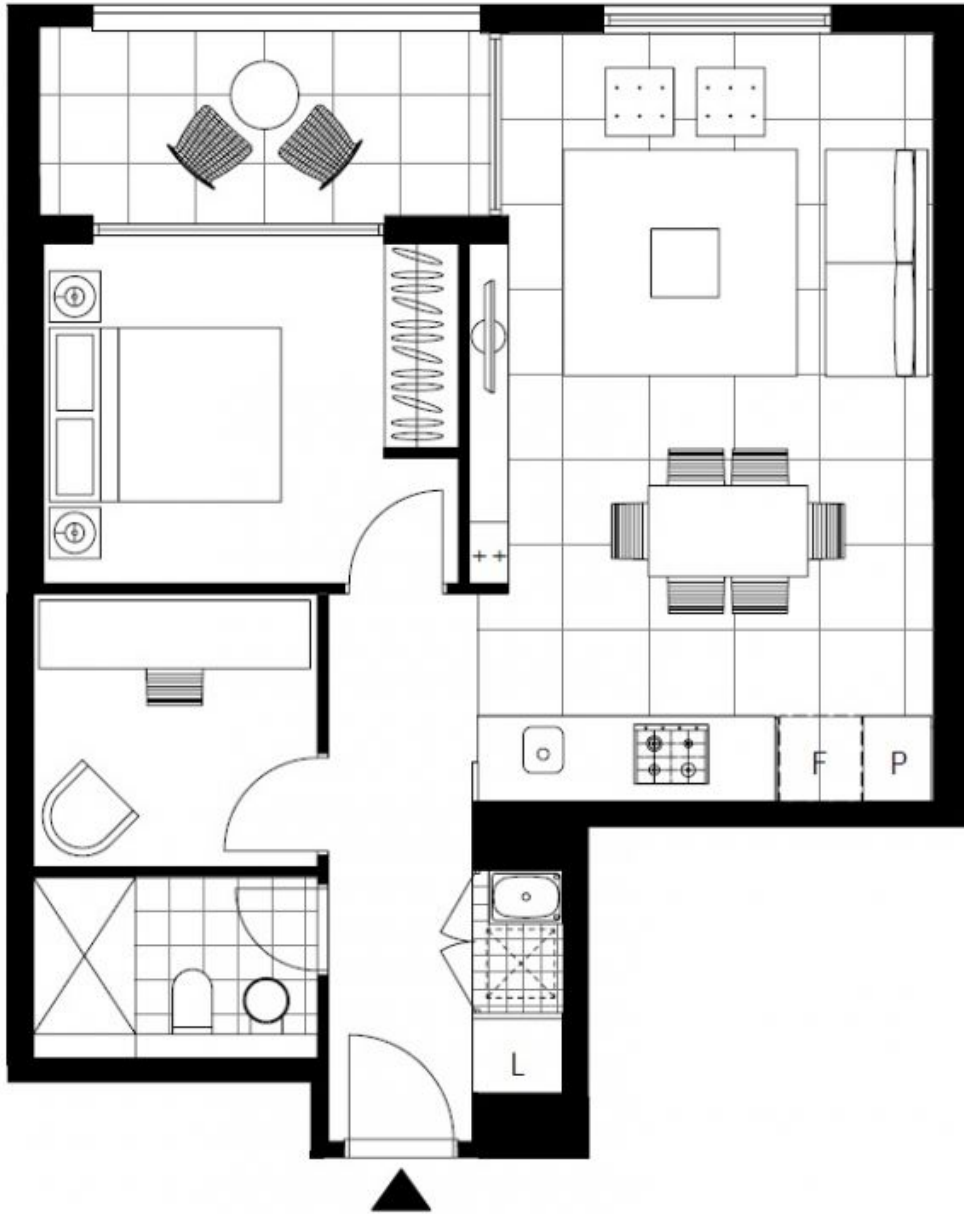
DEPOSIT TAKEN | LEASED OFF MARKET

Contact: Kevin Tam
02 8588 8888
0481 735 222

Type: Apartment

Date Available: 25/09/2024

<https://www.resbymirvac.com>



Plans shown are only indicative of layout. Dimensions are approximate.

Zetland, NSW
605/28 Ebsworth Street