



RES real estate
services
by mirvac



Glebe, NSW

806/147 Ross Street

2 **2** **1**
BED BATH CAR **RES**

Park Facing, Top floor 2-Bedroom Apartment in Harold Park, Glebe

Welcome to Harold Park, Glebe's Secret Backyard.

Here in Harold Park you will find yourself in an idyllic parkside location, with only a short walk to Glebe Foreshore. Just meters away, The Tramsheds retail precinct resides featuring cafes, a grocery store, restaurants and a medical centre.

This 99sqm, 8th floor apartment features:

- Two well-appointed bedrooms with built-in wardrobes
- Bright open-plan living and dining area, flowing onto balcony
- Sleek designer kitchen with stone island benchtop and built-in Miele appliances

Deposit taken | \$1,100 per week | Park facing!

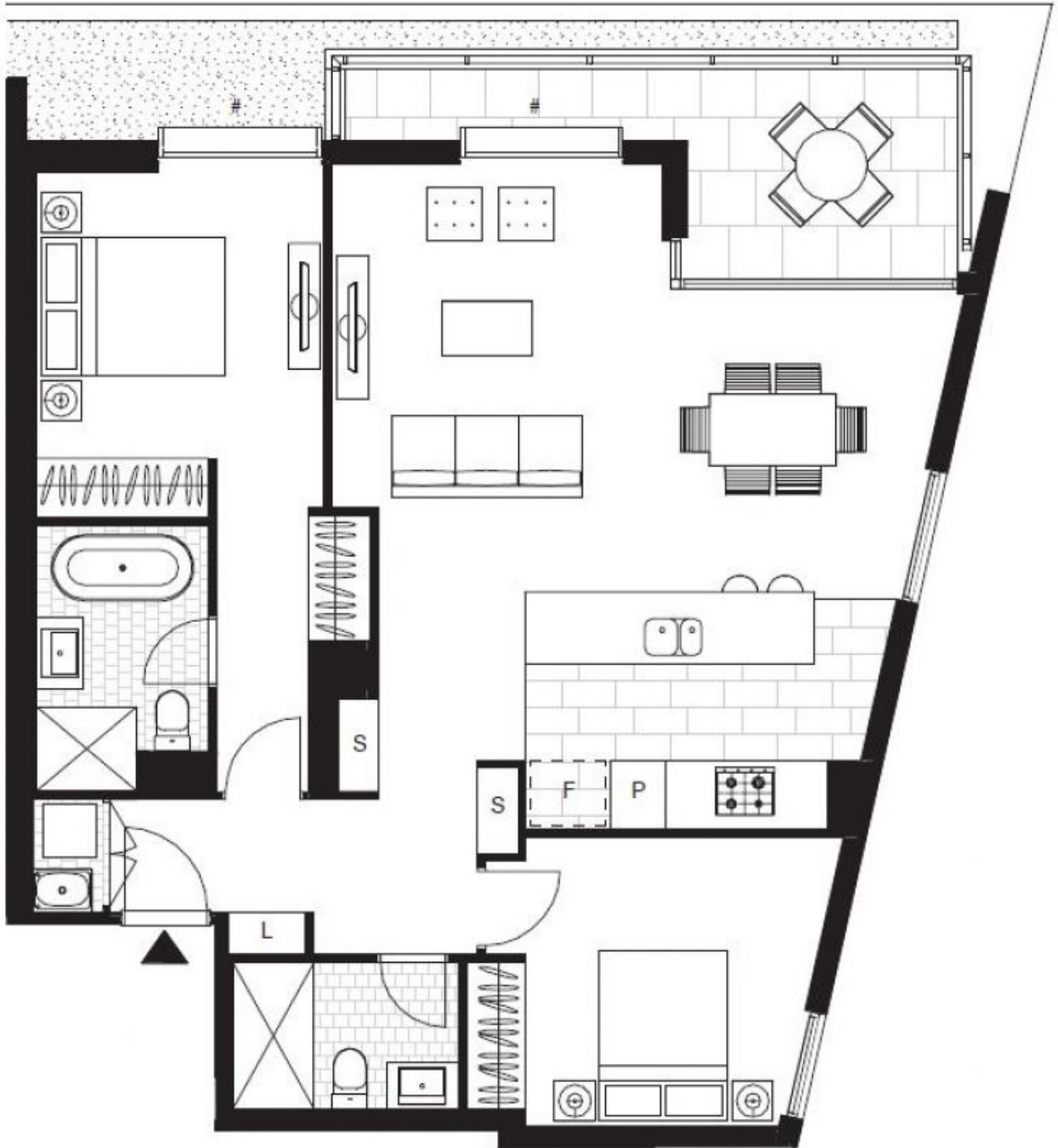
Contact: Naz Sabzpour
02 8588 8888
0401 545 440

Type: Apartment

Date Available: 30/09/2024

Bond: \$4600

<https://www.resbymirvac.com>



Plans shown are only indicative of layout. Dimensions are approximate.

Glebe, NSW
806/147 Ross Street