



Glebe, NSW
5309/148 Ross Street

1
BED

1
BATH



Contemporary 1 Bedroom Apartment in Harold Park, Glebe

Welcome to Harold Park, Glebe's Secret Backyard. Here in Harold Park you will find yourself in an idyllic parkside location, with only a short walk to Glebe Foreshore. Just meters away, The Tramsheds retail precinct resides featuring cafes, a grocery store, restaurants and a medical centre.

This 57sqm, 3rd floor apartment features:

- Well-appointed bedroom with built-in wardrobes
- Spacious open-plan living and dining area, flowing onto balcony
- Modern kitchen with stone benchtop and built-in Miele appliances
- Sleek bathroom with plenty of vanity storage

Deposit Taken!

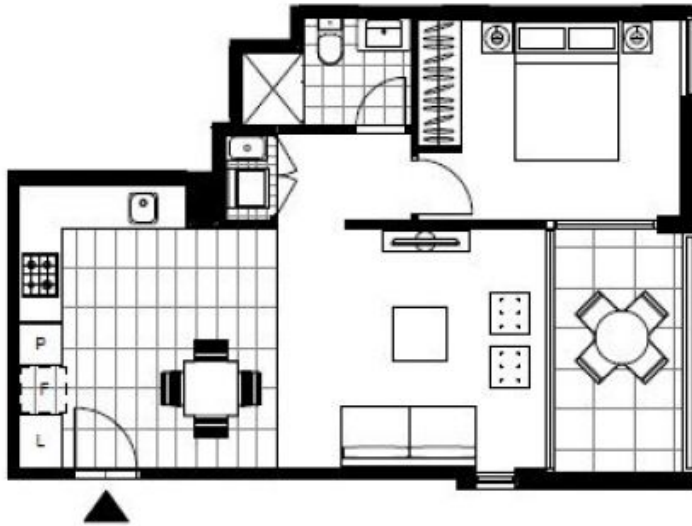
Contact: Naz Sabzpour
02 8588 8888
0401 545 440

Type: Apartment

Date Available: 23/09/2024

Bond: \$2800

<https://www.resbymirvac.com>



LEVEL 3

Plans shown are only indicative of layout. Dimensions are approximate.

Glebe, NSW
5309/148 Ross Street