



RES real estate services by mirvac



RES real estate services by mirvac



Glebe, NSW
107/6 Maxwell Road

3 BED **2** BATH **2** CAR 

Sleek Fully-Furnished, Park-Facing 3 Bedroom Apartment in Mirvac's Harold Park!

Welcome to Harold Park, Glebe's Secret Backyard.

In the charming enclave of Harold Park, you'll discover a picturesque parkside setting, just a leisurely stroll from Glebe Foreshore. Merely steps away, The Tramsheds retail precinct beckons, boasting delightful cafes, a boutique grocery store, renowned restaurants, and even a convenient medical centre. Plus, enjoy close proximity to the light rail, schools, and the city, all just a short distance away, ensuring convenience and connectivity at your fingertips.

This 135sqm furnished apartment offers:

Deposit Taken | \$1,600 per week | Furnished

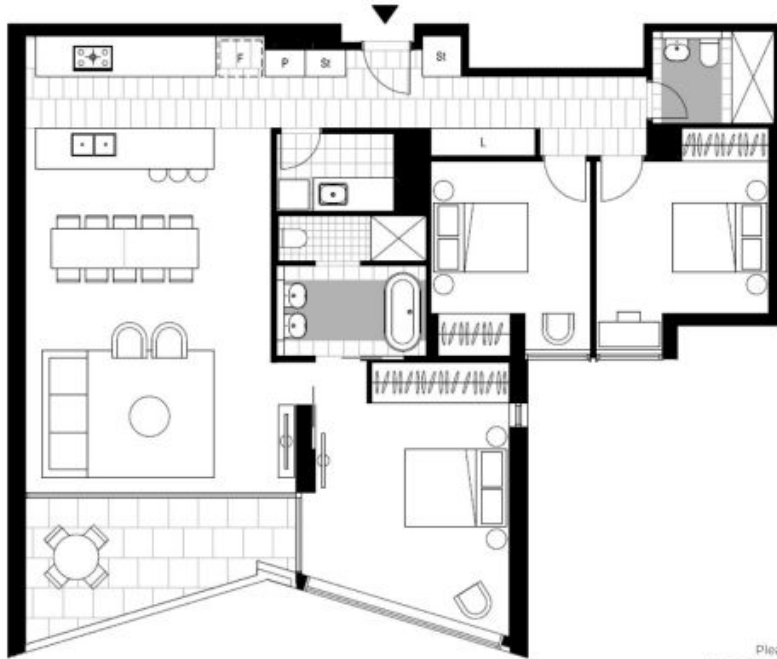
Contact: Naz Sabzpouri
02 8588 8888
0401 545 440

Type: Apartment

Date Available: 25/07/2024

Bond: \$6400

<https://www.resbymirvac.com>



Please note that this floor plan is a guide only
The information contained herein is not guaranteed.
Dimensions are approximate.
Prospective renters must rely on their own enquiries.

107/6 Maxwell Rd, Glebe



Plans shown are only indicative of layout. Dimensions are approximate.

Glebe, NSW
107/6 Maxwell Road