



Glebe, NSW

503/5 Grattan Close

2 BED **2** BATH **1** CAR 

Spacious 2- Bedroom Apartment in Mirvac's Harold Park

Welcome to Harold Park, Glebe's Secret Backyard.

Here in Harold Park you will find yourself in an idyllic parkside location, with only a short walk to Glebe Foreshore. Just meters away, The Tramsheds retail precinct resides featuring cafes, a grocery store, restaurants and a medical centre.

This 100sqm, 5th floor apartment features:

- Well-appointed bedrooms with generous floor-to-ceiling built-in wardrobes
- Open-plan living and dining area, with access to balcony

\$1150 per week |

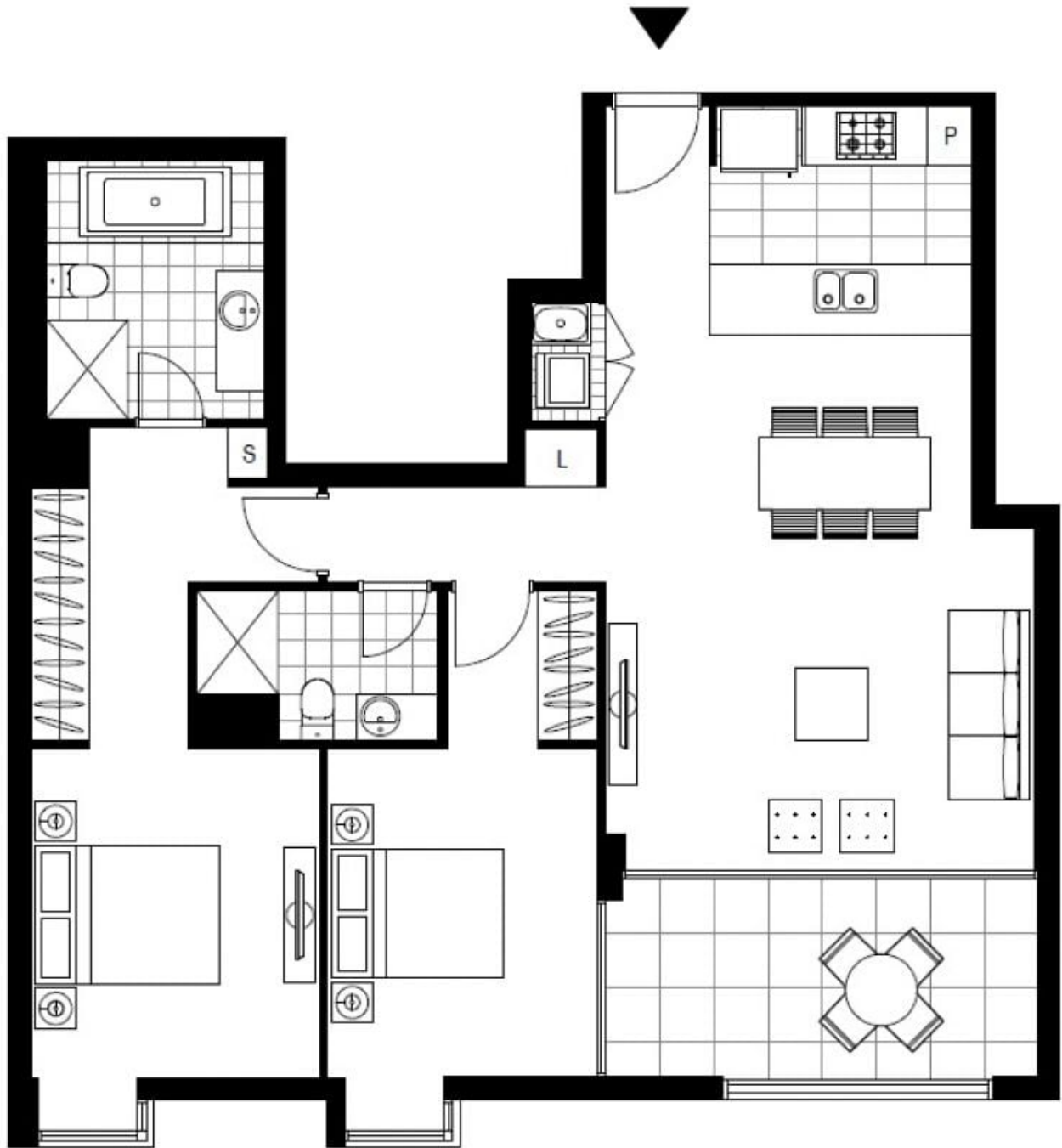
Contact: Naz Sabzpour
02 8588 8888
0401 545 440

Type: Apartment

Date Available: 06/06/2024

Bond: \$4600

<https://www.resbymirvac.com>



Plans shown are only indicative of layout. Dimensions are approximate.

Glebe, NSW
503/5 Grattan Close