



**Glebe, NSW**  
309/86 Wigram Road

**2** BED **2** BATH **1** CAR 

### **Sleek indoor/outdoor entertainer in a vibrant urban setting**

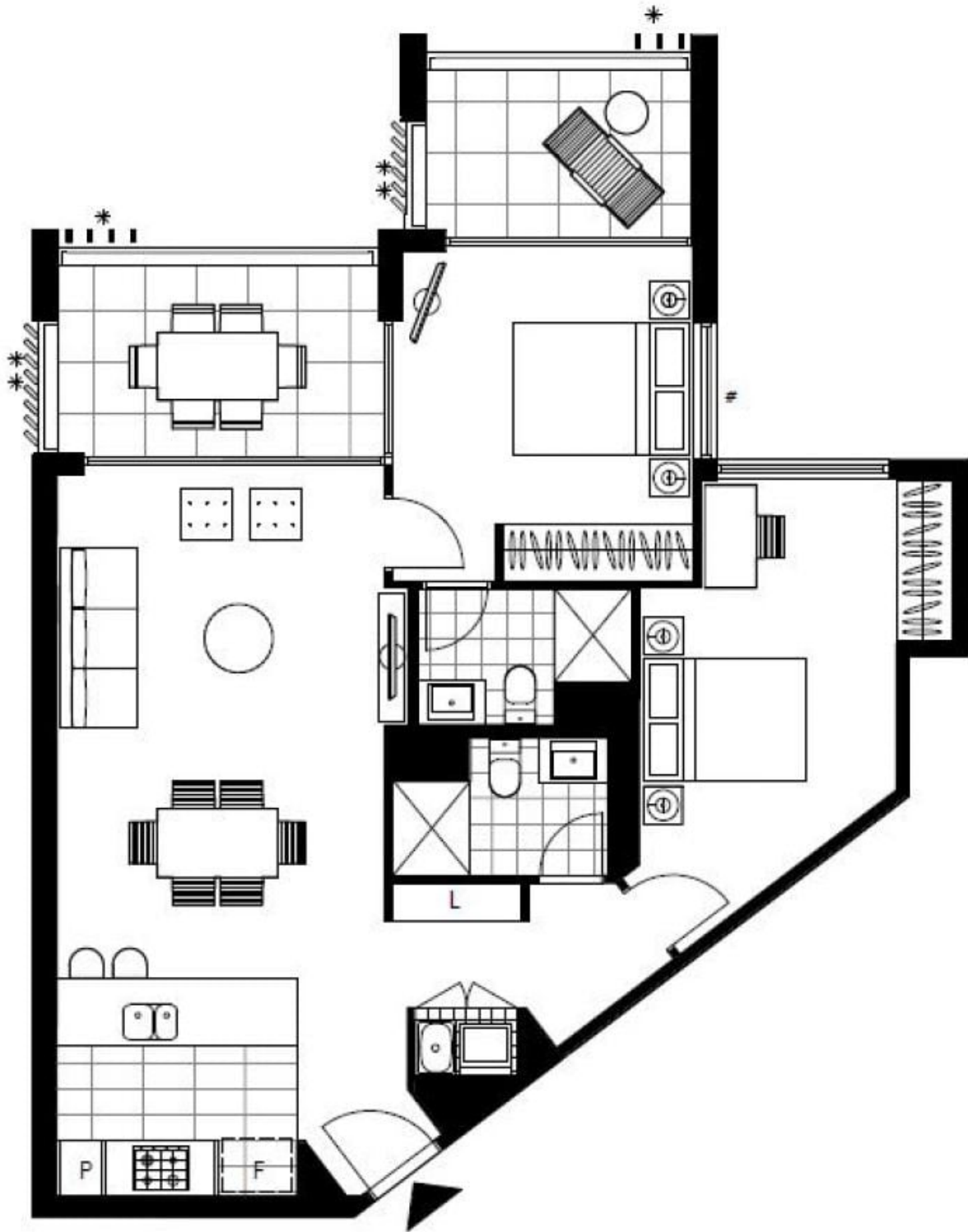
With a loggia-style balcony that's almost like another room, this sleek and sophisticated apartment is a true lifestyle address for those who value space, light and location. The gourmet open plan indoor/outdoor living spaces set the stage for stylish entertaining. Enjoy 'The Harold' as your local and stroll up to the gourmet 'Tramsheds' in five minutes through parks and walking tracks.

- ? Pristine open plan kitchen and spacious living/dining room
- ? Loggia-style terrace for all-weather alfresco entertaining
- ? Stone kitchen with stainless steel appliances, gas cook top
- ? Generous bedrooms with built-in robes, main with ensuite
- ? Two stylish fully tiled bathrooms, internal laundry facilities

**Buyer Guide \$1,450,000 - \$1,500,000**

**Contact:** Emma Symonds  
02 8588 8888  
0412 660 011

**Type:** Apartment  
<https://www.resbymirvac.com>



Plans shown are only indicative of layout. Dimensions are approximate.

**Glebe, NSW**  
309/86 Wigram Road