



RES real estate services by mirvac



RES real estate services by mirvac



**Zetland, NSW**  
303/10 Zetland Avenue

**2** BED **2** BATH **1** CAR



**Impeccably Designed 2 Bedroom Apartment in Green Square's Newest Building 'Portman on the Park'**

Welcome to Portman on the Park by Mirvac

Nestled within one of Sydney's burgeoning residential enclaves, 'Portman on the Park' exudes sophistication and exclusivity. Embraced by newly completed Drying Green parkland, alongside the prestigious Green Square Train Station, Library, and the opulent Gunyama Aquatic and Recreation Centre, this residence epitomizes refined urban living. Indulge in the epitome of convenience with a myriad of upscale amenities at your fingertips, including esteemed schools, bespoke dining destinations, charming cafes, and verdant parklands-all mere moments from your doorstep.

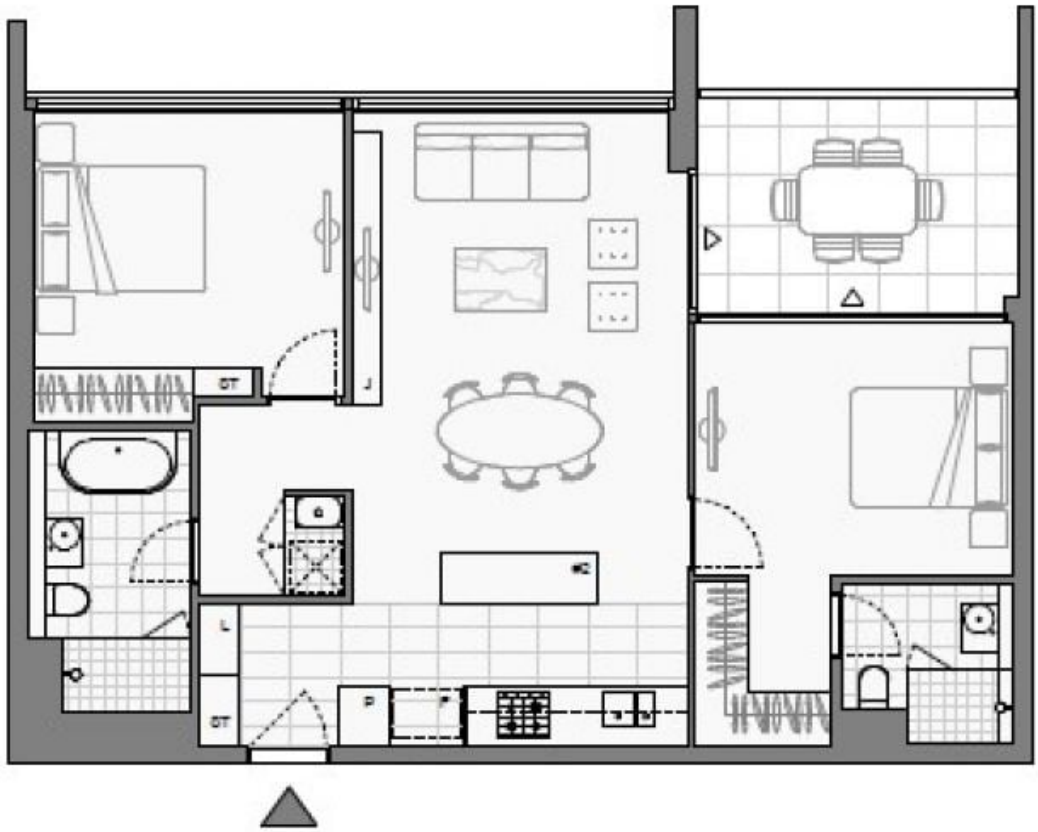
**\$1,550 per week | Brand new**

**Contact:** Kevin Tam  
02 8588 8888  
0481 735 222  
Georgia Glynn  
02 8588 8888  
0481 388 777

**Type:** Apartment

**Date Available:** 20/06/2024

**<https://www.resbymirvac.com>**



Plans shown are only indicative of layout. Dimensions are approximate.

**Zetland, NSW**  
303/10 Zetland Avenue