



Zetland, NSW

801/6 Zetland Avenue

2
BED

2
BATH

1
CAR



Sleek & Modern City Facing 2-Bedroom Apartment in Mirvac's Brand New "Portman on the Park" Building, Green Square

Welcome to Portman on the Park by Mirvac

Nestled within one of Sydney's burgeoning residential enclaves, 'Portman on the Park' exudes sophistication and exclusivity. Embraced by newly completed Drying Green parkland, alongside the prestigious Green Square Train Station, Library, and the opulent Gunyama Aquatic and Recreation Centre, this residence epitomizes refined urban living. Indulge in the epitome of convenience with a myriad of upscale amenities at your fingertips, including esteemed schools, bespoke dining destinations, charming cafes, and verdant parklands-all mere moments from your doorstep.

\$1,520 per week | City Views, Brand New!

Contact:

Kevin Tam

02 8588 8888

0481 735 222

Georgia Glynn

02 8588 8888

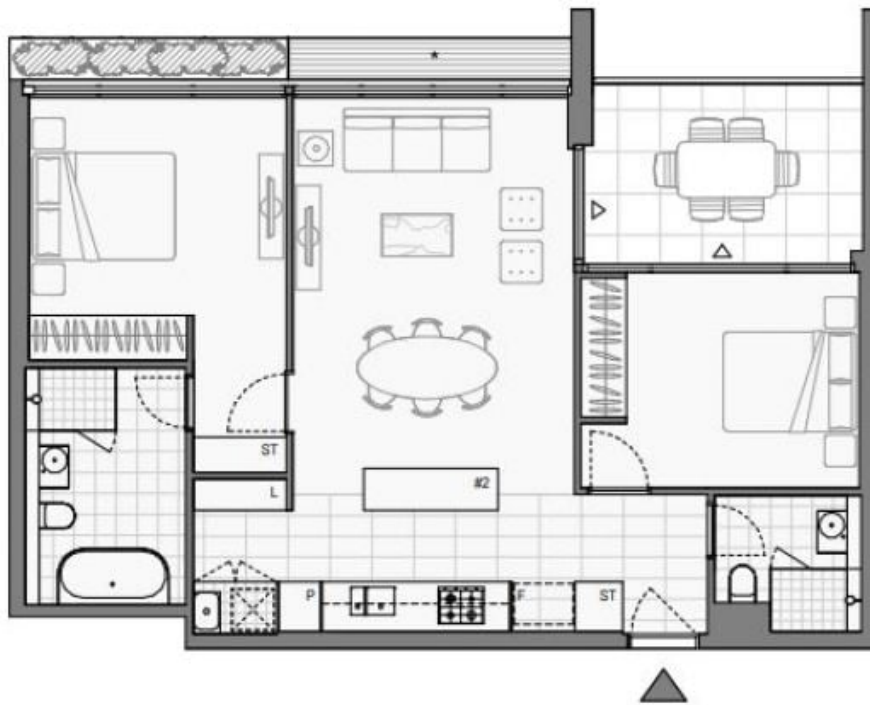
0481 388 777

Type:

Apartment

Date Available: 07/06/2024

<https://www.resbymirvac.com>



Plans shown are only indicative of layout. Dimensions are approximate.

Zetland, NSW
801/6 Zetland Avenue