



RES real estate services by mirvac



RES real estate services by mirvac



Glebe, NSW
505/22 Scotsman Street

2 BED **2** BATH **1** CAR



Bright & Spacious North-Facing, 2-Bedroom Apartment in Harold Park

Welcome to Harold Park, Glebe's Secret Backyard.

In the charming enclave of Harold Park, you'll discover a picturesque parkside setting, just a leisurely stroll from Glebe Foreshore. Merely steps away, The Tramsheds retail precinct beckons, boasting delightful cafes, a boutique grocery store, renowned restaurants, and even a convenient medical centre. Plus, enjoy close proximity to the light rail, schools, and the city, all just a short distance away, ensuring convenience and connectivity at your fingertips.

This 112sqm, 'Locarno' apartment features:

\$1150 per week | Parking Included!

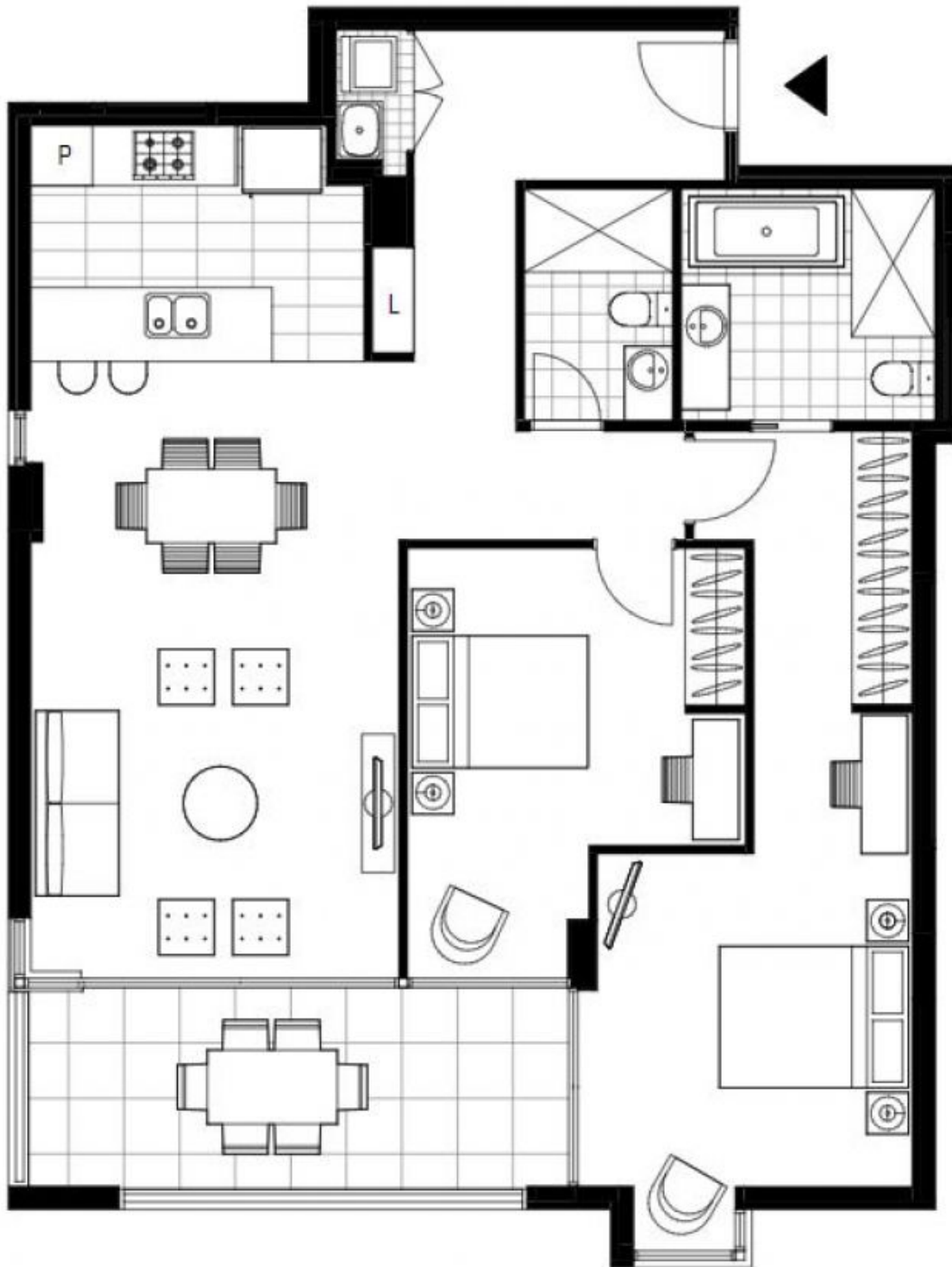
Contact: Naz Sabzpour
02 8588 8888
0401 545 440

Type: Apartment

Date Available: 11/05/2024

Bond: \$4800

<https://www.resbymirvac.com>



Plans shown are only indicative of layout. Dimensions are approximate.

Glebe, NSW
505/22 Scotsman Street