



Glebe, NSW

412/2 Scotsman Street

1
BED

1
BATH



Modern North Facing 1-Bedroom Apartment in Harold Park, Glebe

Welcome to Harold Park, Glebe's Secret Backyard.

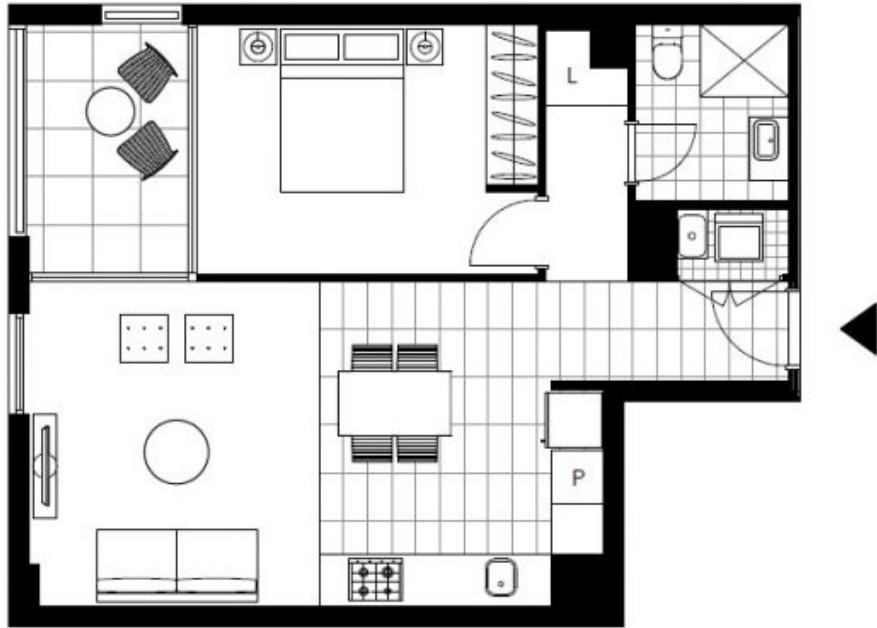
In the charming enclave of Harold Park, you'll discover a picturesque parkside setting, just a leisurely stroll from Glebe Foreshore. Merely steps away, The Tramsheds retail precinct beckons, boasting delightful cafes, a boutique grocery store, renowned restaurants, and even a convenient medical centre. Plus, enjoy close proximity to the light rail, schools, and the city, all just a short distance away, ensuring convenience and connectivity at your fingertips.

This well-appointed 'Locarno' apartment features :

Deposit Taken!

Contact: Naz Sabzpour
02 8588 8888
0401 545 440

Type: Apartment
Date Available: 08/05/2024
Land: 61Square Metres
Bond: \$3180
<https://www.resbymirvac.com>



Plans shown are only indicative of layout. Dimensions are approximate.

Glebe, NSW
412/2 Scotsman Street