



Zetland, NSW

403/6 Zetland Avenue

3
BED

2
BATH

1
CAR



Discover City Elegance in this Sophisticated Brand New 3-bedroom at 'Portman on the Park'

Welcome to Portman on the Park by Mirvac

Nestled within one of Sydney's burgeoning residential enclaves, 'Portman on the Park' exudes sophistication and exclusivity. Embraced by newly completed Drying Green parkland, alongside the prestigious Green Square Train Station, Library, and the opulent Gunyama Aquatic and Recreation Centre, this residence epitomizes refined urban living. Indulge in the epitome of convenience with a myriad of upscale amenities at your fingertips, including esteemed schools, bespoke dining destinations, charming cafes, and verdant parklands-all mere moments from your doorstep.

\$1,880 per week | Brand New with Parking!

View: Sat, 18 May 2024 @2:40 pm - 3:10 pm

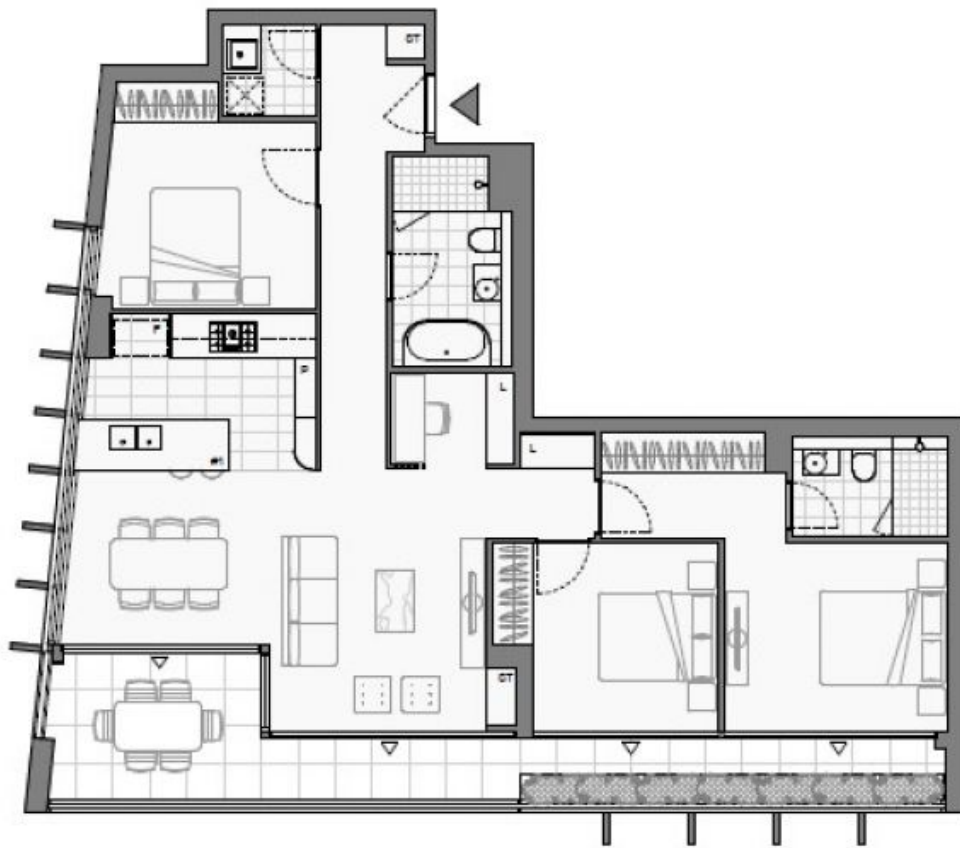
Contact: Georgia Glynn
02 8588 8888
0481 388 777
Kevin Tam
02 8588 8888
0481 735 222

Type: Apartment

Date Available: 10/05/2024

Bond: \$7520

<https://www.resbymirvac.com>



Plans shown are only indicative of layout. Dimensions are approximate.

Zetland, NSW
403/6 Zetland Avenue