



## Glebe, NSW

601/148 Ross Street

**1** BED **1** BATH



### Contemporary 1-Bedroom Apartment in Heart of Harold Park, Glebe

Welcome to Harold Park, Glebe's Secret Backyard.

Here in Harold Park you will find yourself in an idyllic parkside location, with only a short walk to Glebe Foreshore. Just meters away, The Tramsheds retail precinct resides featuring cafes, a grocery store, restaurants and a medical centre.

This 6th floor apartment features:

- Spacious bedroom with built-in wardrobes
- Open-plan living and dining area, flowing onto internal garden facing balcony

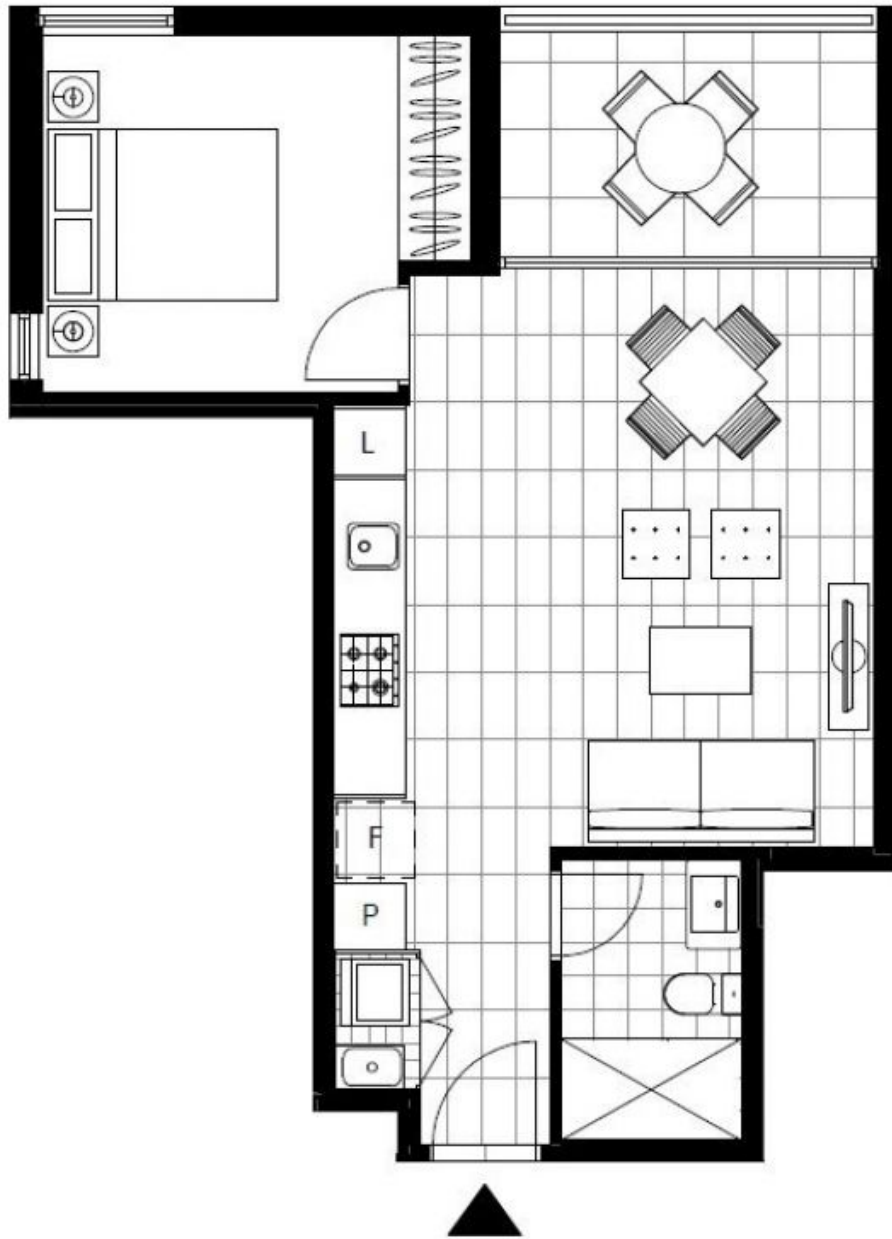
**\$750 per week**

**Contact:** Naz Sabzpouri  
02 8588 8888  
0401 545 440

**Type:** Apartment

**Date Available:** 03/05/2024

**<https://www.resbymirvac.com>**



Plans shown are only indicative of layout. Dimensions are approximate.

**Glebe, NSW**  
601/148 Ross Street