



Glebe, NSW
601/148 Ross Street

1
BED

1
BATH



Contemporary 1-Bedroom Apartment in Heart of Harold Park, Glebe

Welcome to Harold Park, Glebe's Secret Backyard.

Here in Harold Park you will find yourself in an idyllic parkside location, with only a short walk to Glebe Foreshore. Just meters away, The Tramsheds retail precinct resides featuring cafes, a grocery store, restaurants and a medical centre.

This 6th floor apartment features:

- Spacious bedroom with built-in wardrobes
- Open-plan living and dining area, flowing onto internal garden facing balcony

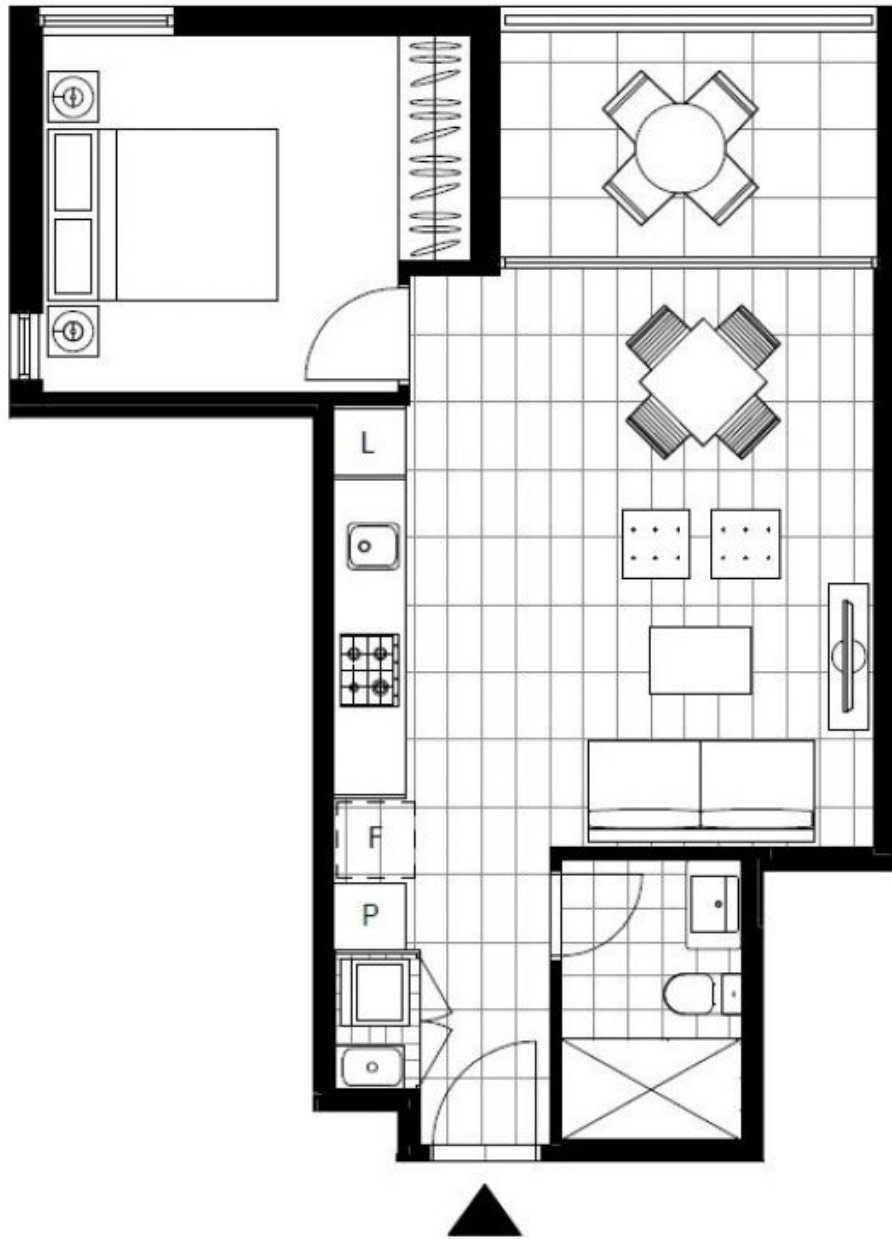
Deposit Taken!

Contact: Naz Sabzpouri
02 8588 8888
0401 545 440

Type: Apartment

Date Available: 03/05/2024

<https://www.resbymirvac.com>



Plans shown are only indicative of layout. Dimensions are approximate.

Glebe, NSW
601/148 Ross Street