



Glebe, NSW

402/170 Ross Street

2
BED

2
BATH

1
CAR



Oversized 2 Bedroom Apartment in Mirvac's Harold Park

Welcome to Harold Park, Glebe's Secret Backyard.

Here in Harold Park you will find yourself in an idyllic parkside location, with only a short walk to Glebe Foreshore. Just meters away, The Tramsheds retail precinct resides featuring cafes, a grocery store, restaurants and a medical centre.

This 104sqm, 2-bedroom apartment features:

- Well-appointed bedrooms with generous floor-to-ceiling built-in wardrobes
- Open-plan living and dining area, with access to balcony

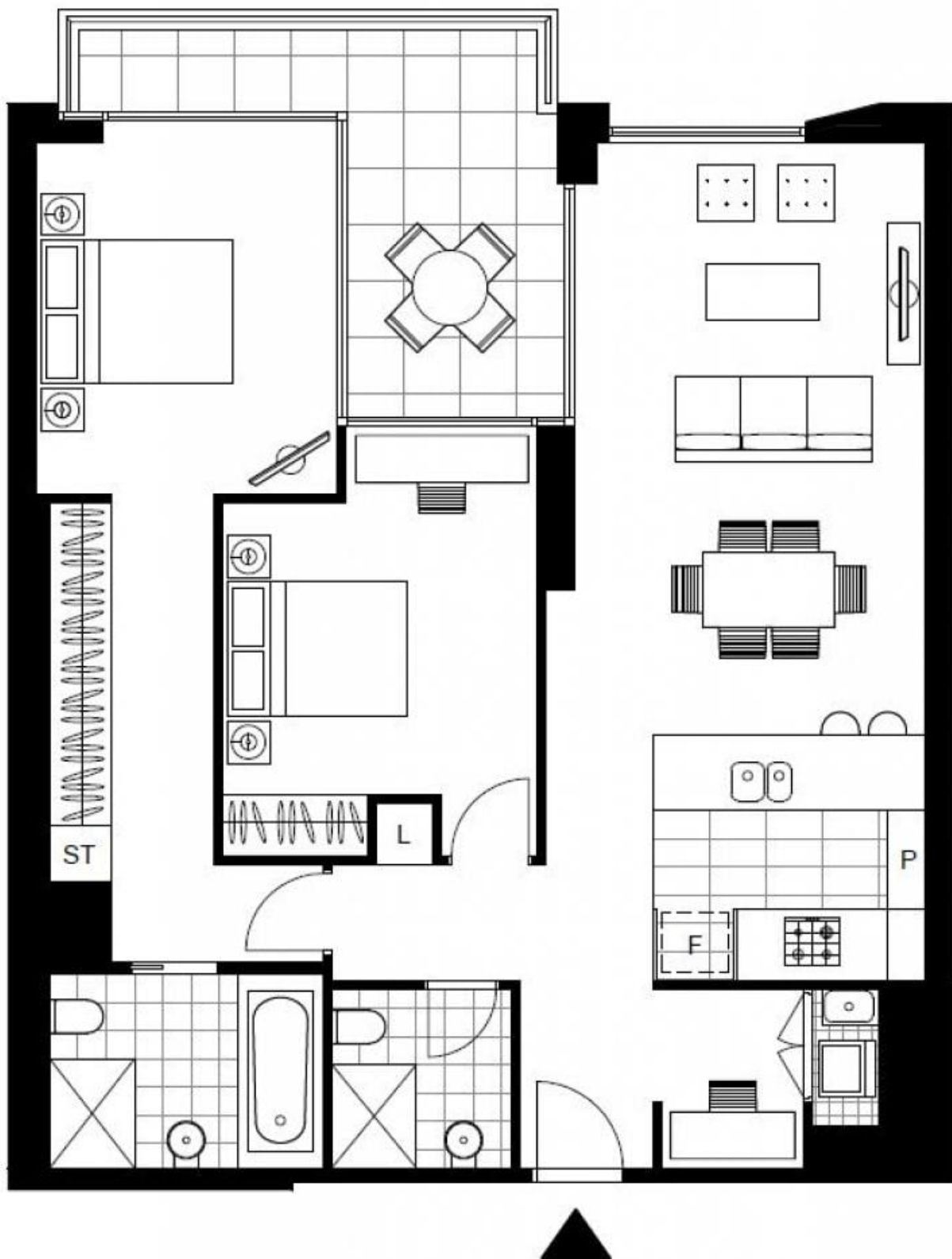
\$1,100 per week | Parking Included

View: Sat, 18 May 2024 @ 12:20 pm - 12:40 pm
Contact: Naz Sabzpouri
 02 8588 8888
 0401 545 440

Type: Apartment

Date Available: 08/05/2024

<https://www.resbymirvac.com>



Plans shown are only indicative of layout. Dimensions are approximate.

Glebe, NSW
402/170 Ross Street