



**Willoughby, NSW**  
308/1 Scott Street

**2** BED **2** BATH **1** CAR



**Brand New Garden Facing 2 Bedroom Apartment with Parking in NINE by Mirvac**

Welcome to NINE by Mirvac

Nestled within the picturesque Lower North Shore, just 6km from Sydney's vibrant CBD and a mere 3.2km from the heart of North Sydney, resides the highly anticipated NINE by Mirvac. Embracing a lifestyle at NINE offers seamless connections, with the convenience of Artarmon Train Station (only 1.7km away), the bustling Chatswood CBD (merely 3.9km away), and easy access to the M1 & M2 road networks. This haven is also surrounded by local boutiques, esteemed schools, verdant parklands, a state-of-the-art leisure centre, and an array of delectable dining options.

This 3rd floor, 'Montage' apartment features:

**Saturday Inspection Cancelled | Deposit Taken!**

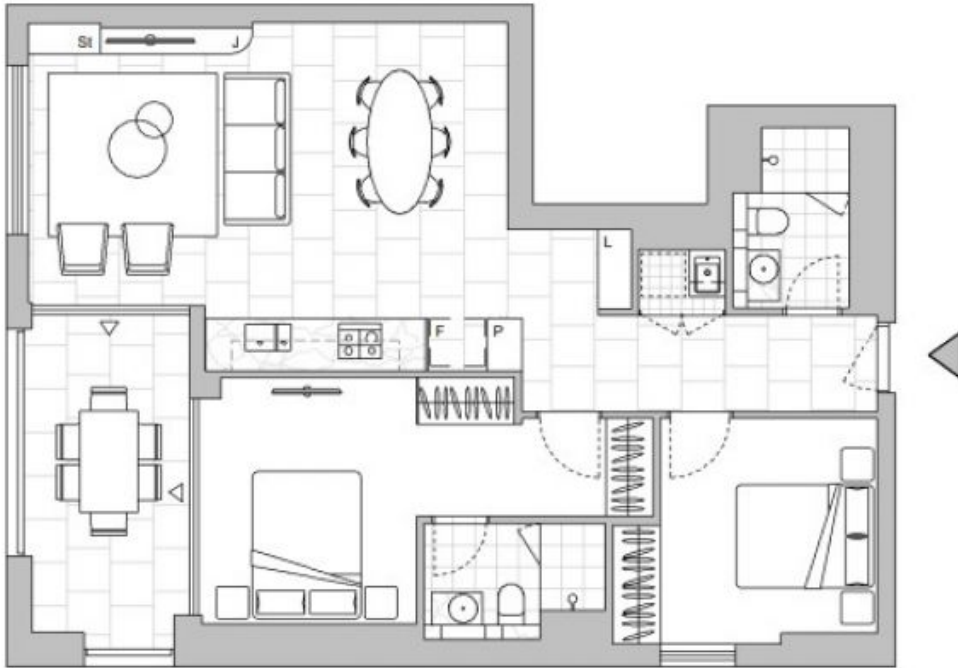
**Contact:** Renee Zhang  
02 8588 8888  
0481440088

**Type:** Apartment

**Date Available:** 29/04/2024

**Bond:** \$4800

<https://www.resbymirvac.com>



Plans shown are only indicative of layout. Dimensions are approximate.

**Willoughby, NSW**  
308/1 Scott Street