



Docklands, VIC

2106/81 South Wharf Drive

2
BED

2
BATH

1
CAR



Luxury living in Mirvac's prestigious Yarra's Edge community

Welcome to Yarra's Edge - Forge tower,

A perfectly positioned waterfront location, only moments away from an array of cafes, restaurants, parks, Yarra's Edge promenade and IGA supermarket. Forge residents will enjoy spaces that extend their personal living environment. A private dining room and cinema can be reserved by residents who want to elevate their gathering with plush surrounds and cityscape views.

Apartment Features:

- Open plan living and dining with Port Phillip Bay views
- Contemporary kitchen complete with European appliances

\$800 per week

Contact: Aleiasha Clark
03 9645 1199
0491 174 507

Type: Apartment

Date Available: 31/05/2024

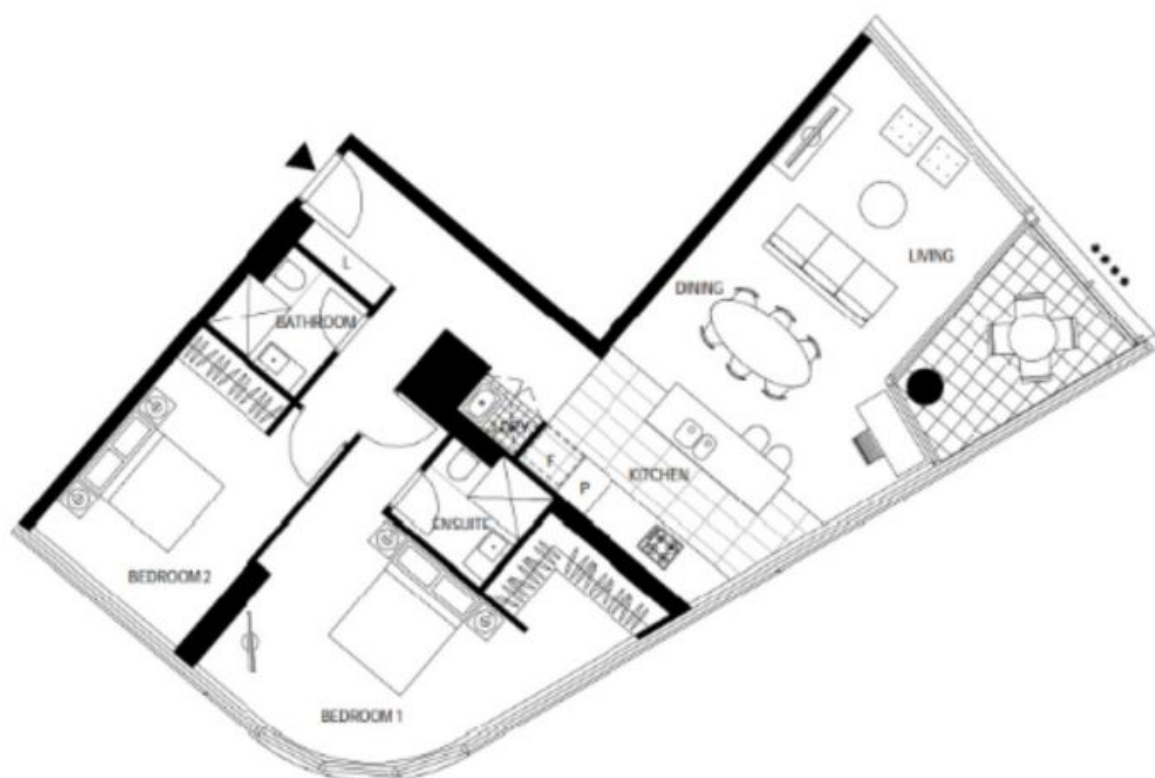
<https://www.resbymirvac.com>



2

2

1



LEVEL 21

Please note that this floor plan is a guide only.
The information contained herein is not
guaranteed. Dimensions are approximate.
Prospective purchasers must rely on their own
enquiries.



real estate
services
by mirvac



2106/81 South Wharf Drive

DOCKLANDS

Plans shown are only indicative of layout. Dimensions are approximate.

Docklands, VIC
2106/81 South Wharf Drive