



Sydney Olympic Park, NSW

20605/2 Figtree Drive

1 BED **1** BATH



Contemporary 1 Bedroom Apartment in 'Pavilions', Sydney Olympic Park

Welcome to Pavilions in Sydney Olympic Park

Discover the unparalleled allure of Sydney Olympic Park, where Pavilions by Mirvac offers a lifestyle of convenience and luxury. Nestled amidst vibrant parklands, trendy cafes, and world-class sporting facilities, residents enjoy proximity to an array of amenities. As a resident of Pavilions by Mirvac, you'll have exclusive access to a gym, co-working space, and a dedicated children's play area, ensuring every aspect of your lifestyle is catered to with style and sophistication.

This 63sqm, 6th floor apartment features:

\$630 per week | Deposit Taken!

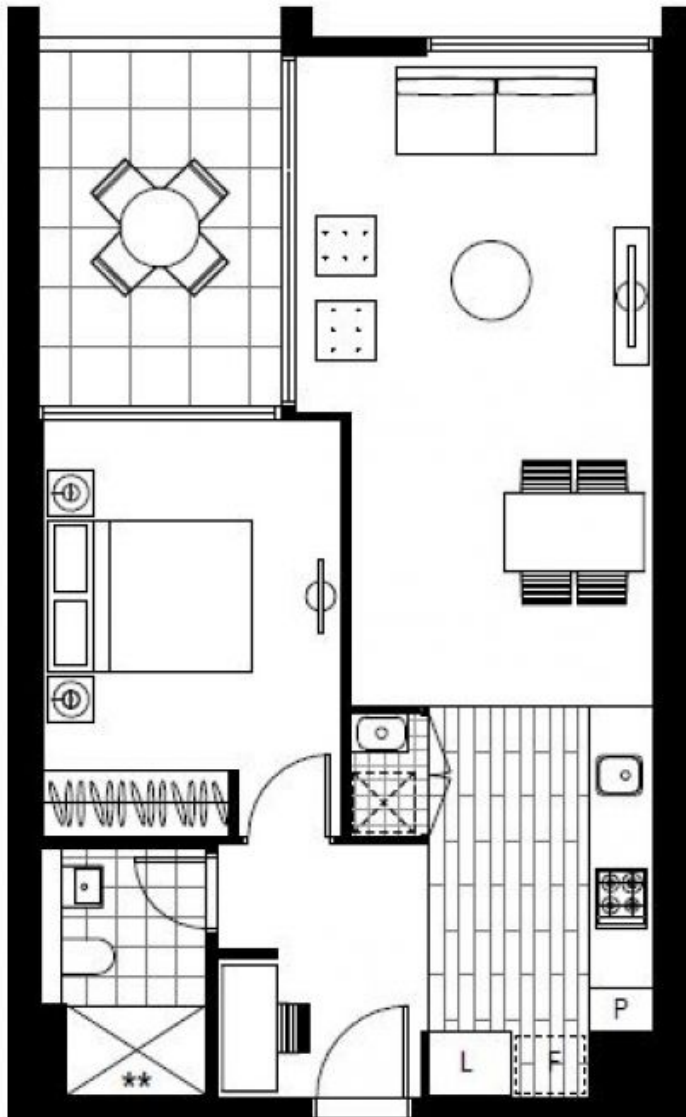
Contact: Renee Zhang
02 8588 8888
0481 440 088

Type: Apartment

Date Available: 27/04/2024

Bond: \$2520

<https://www.resbymirvac.com>



Plans shown are only indicative of layout. Dimensions are approximate.

Sydney Olympic Park, NSW
20605/2 Figtree Drive