



Docklands, VIC
808/60 Lorimer Street

1 BED	1 BATH	1 CAR
-----------------	------------------	-----------------



Beautifully Furnished 1 Bedroom Apartment in Mirvac's Yarra's Edge

Welcome to Yarra's Edge, Docklands' most prestigious riverside community.

A perfectly positioned waterfront location, only moments away from an array of cafes, restaurants, parks, Yarra's Edge promenade and IGA supermarket. Entertain guests on Tower 2's rooftop terrace kitchen garden and BBQ area.

Residents may also enjoy access to Mirvac's state of the art Rek Dek facilities at the base of Tower 1; comprising of a 25M lap pool, spa, sauna and gymnasium.

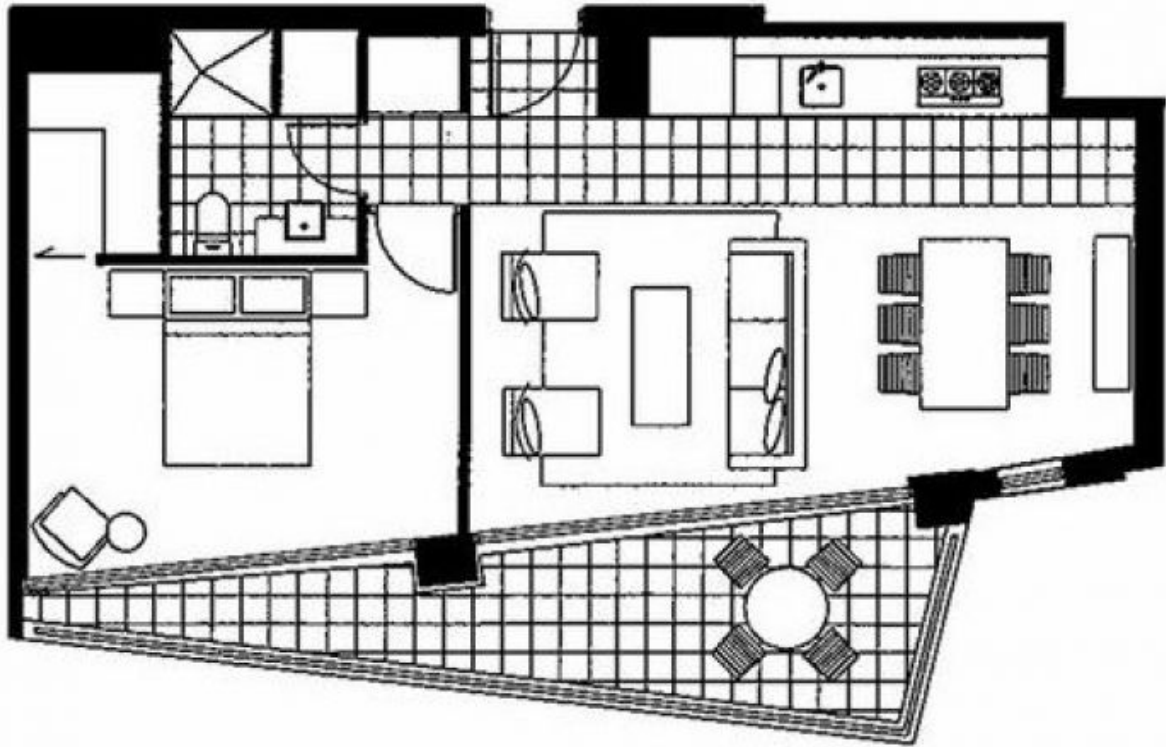
\$650 per week

Contact: Aleiasha Clark
03 9645 1199
0491 174 507

Type: Apartment

Date Available: 30/04/2024

<https://www.resbymirvac.com>



Plans shown are only indicative of layout. Dimensions are approximate.

Docklands, VIC
808/60 Lorimer Street