



Docklands, VIC

2505/50 Lorimer Street



Supersized 2Bedroom apartment of looking the Yarra's Edge marina

Located on the 25th floor, this spacious 2 bedroom, 2 bathroom apartment boasts and abundance of space along with breath taking views of Yarras Edge and surrounds.

Residents of Tower 1 may also enjoy access to Mirvac's premier Rek Dek facilities located at the base of the building, featuring a 25-meter lap pool, spa, sauna, and gymnasium.

Apartment Features:

- Open plan living and dining area flowing to full length balcony overlooking Yarra's Edge marina
- Expansive kitchen includes large island bench, integrated fridge/ freezer and plenty of storage

\$870 per week

Contact: Aleiasha Clark
03 9645 1199
0491 174 507

Type: Apartment

Date Available: 05/04/2024

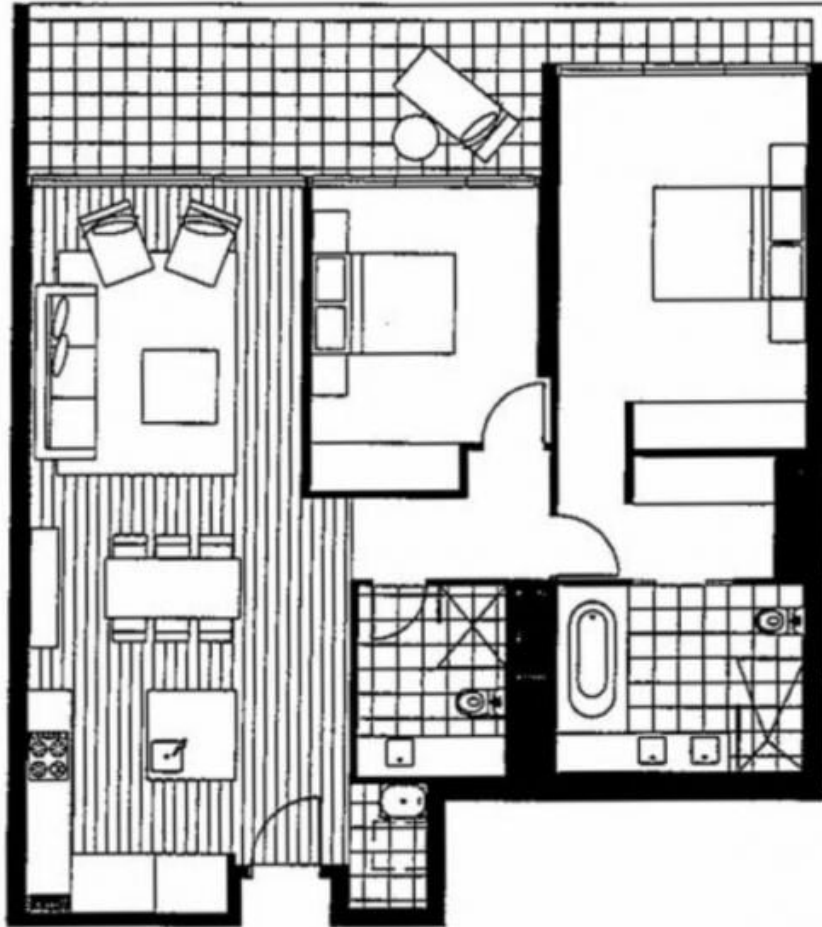
<https://www.resbymirvac.com>



2

2

2



LEVEL 25

Please note that this floor plan is a guide only. The information contained herein is not guaranteed. Dimensions are approximate. Prospective purchasers must rely on their own enquiries.



real estate
services
by mirvac

2505/50 Lorimer St

DOCKLANDS

Plans shown are only indicative of layout. Dimensions are approximate.

Docklands, VIC
2505/50 Lorimer Street