



Zetland, NSW
703/32 Ebsworth Street

2 BED **2** BATH **1** CAR



Brand New 2 Bedroom Apartment with Timber Flooring in Newest Building in Green Square, 'Portman House'

Welcome to Portman House by Mirvac

Contemporary meets Art Deco at Portman House. This sophisticated residence offers a haven comfort and calm. Occupying a privileged parkside position at Green Square, it is close to an abundance of places to meet, play, work and learn while being conveniently located between Sydney Airport and the CBD.?

This brand new apartment features:

- Well-appointed living and dining area, flowing onto balcony
- Two spacious bedrooms with fit-out built-in wardrobes

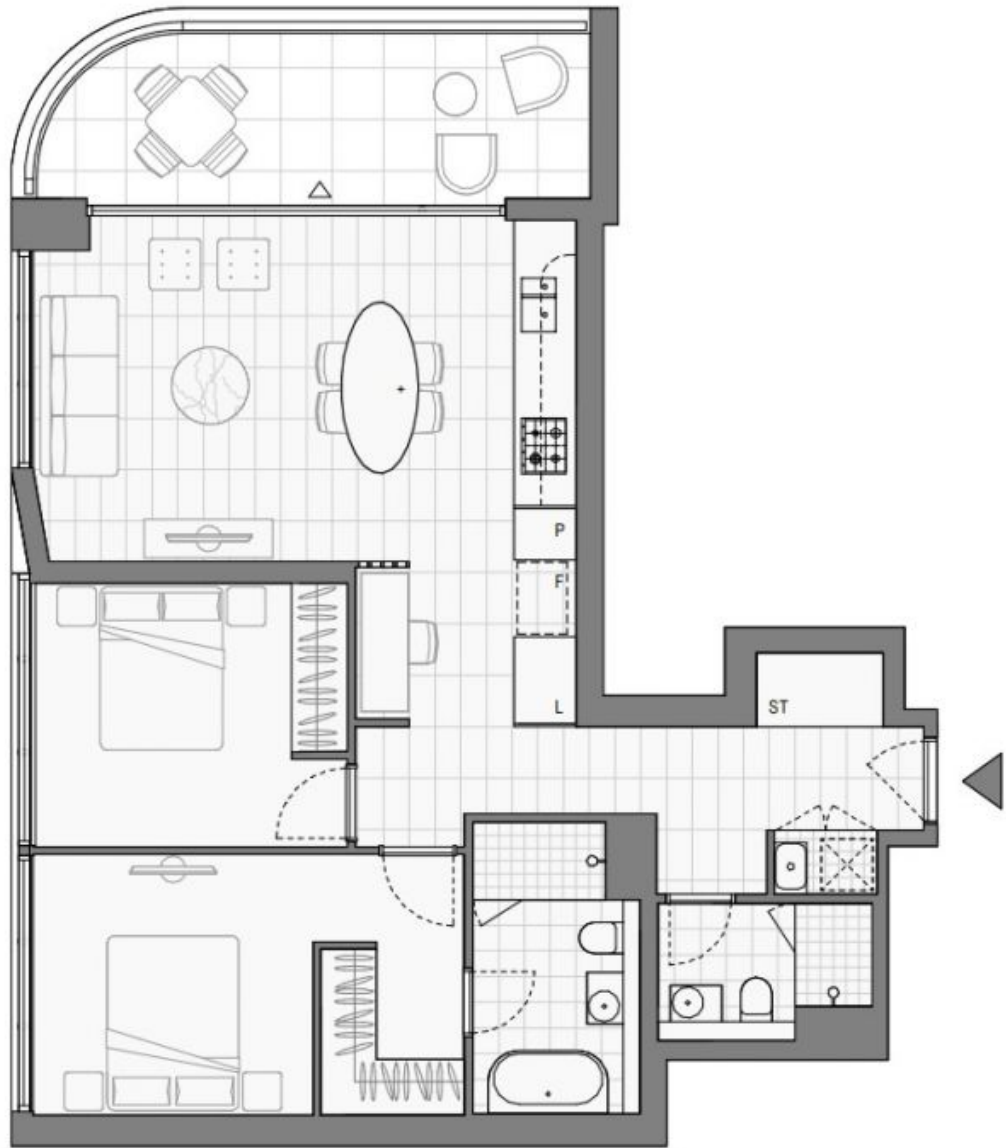
\$1,500pw | Leased first inspection!

Contact: Kevin Tam
02 8588 8888
0481735222

Type: Apartment

Date Available: 26/03/2024

<https://www.resbymirvac.com>



LEVEL 7, 8, 9, 10, 11, 12

Plans shown are only indicative of layout. Dimensions are approximate.

Zetland, NSW
703/32 Ebsworth Street