



## Zetland, NSW

703/32 Ebsworth Street

**2** **2** **1**   
BED BATH CAR

### Brand New 2 Bedroom Apartment with Timber Flooring in Newest Building in Green Square, 'Portman House'

Welcome to Portman House by Mirvac

Contemporary meets Art Deco at Portman House. This sophisticated residence offers a haven comfort and calm. Occupying a privileged parkside position at Green Square, it is close to an abundance of places to meet, play, work and learn while being conveniently located between Sydney Airport and the CBD.?

This brand new apartment features:

- Well-appointed living and dining area, flowing onto balcony
- Two spacious bedrooms with fit-out built-in wardrobes

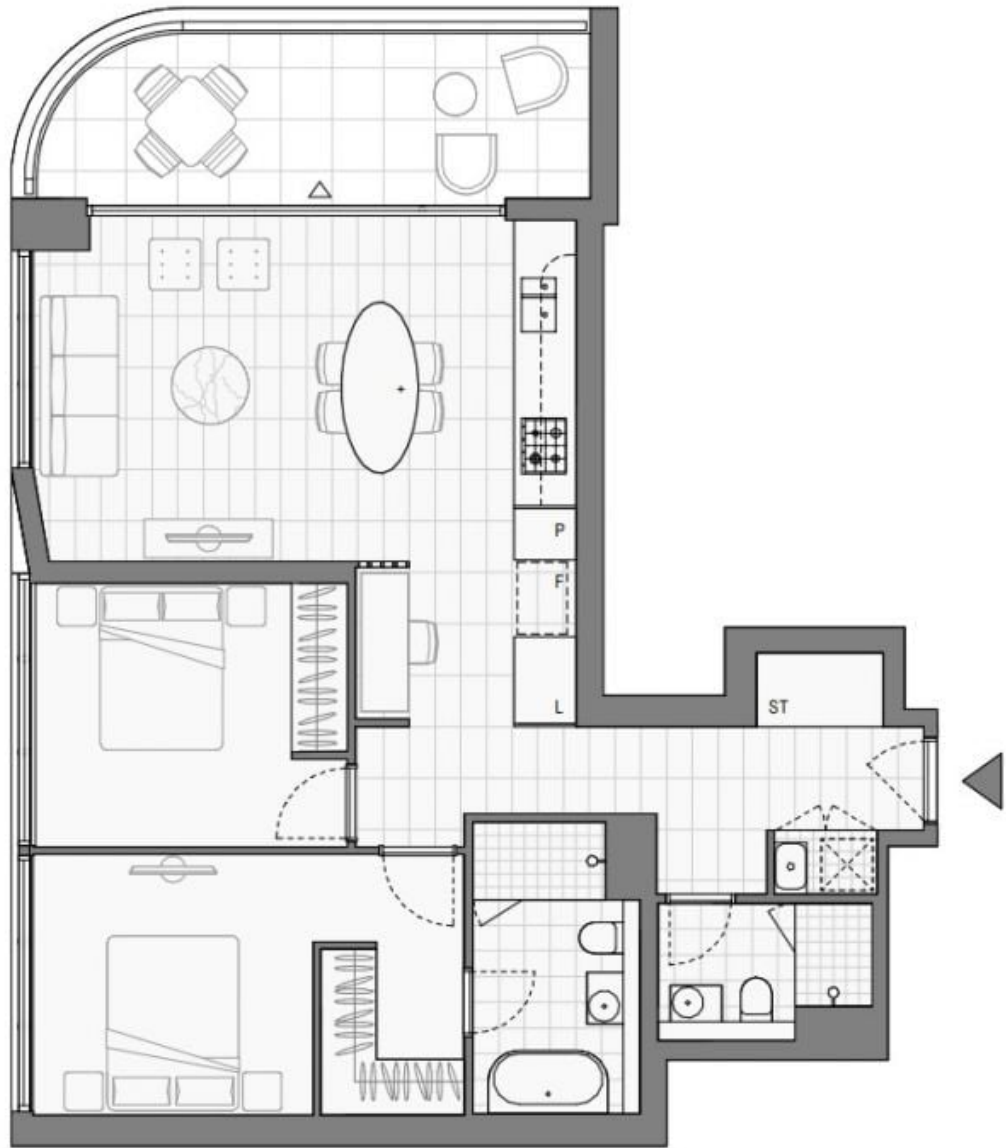
**\$1,500pw | Leased first inspection!**

**Contact:** Kevin Tam  
02 8588 8888  
0481735222  
Carmen Whiteley  
02 8588 8888  
0497 555 519

**Type:** Apartment

**Date Available:** 26/03/2024

**<https://www.resbymirvac.com>**



LEVEL 7, 8, 9, 10, 11, 12

Plans shown are only indicative of layout. Dimensions are approximate.

**Zetland, NSW**  
703/32 Ebsworth Street