



Zetland, NSW

409/8 Ebsworth Street

1
BED

1
BATH



Spacious 1-Bedroom Apartment in 'No. 8 Ebsworth', Zetland

This 58sqm, 1-Bedroom Apartment features:

- Spacious bedroom with generous built-in wardrobe and direct access to balcony
- Open-plan, tiled living and dining area, leading to entertainers' balcony
- Modern kitchen with stone benchtop and Smeg appliances
- Stylish bathroom with plenty of vanity storage
- Exclusive residential access to rooftop courtyard
- Internal laundry with dryer included
- Secure storage cage included
- Ducted A/C, video intercom and NBN connectivity
- 300m to Woolworths, The Social Corner and Green Square Train Station (10mins to the City)

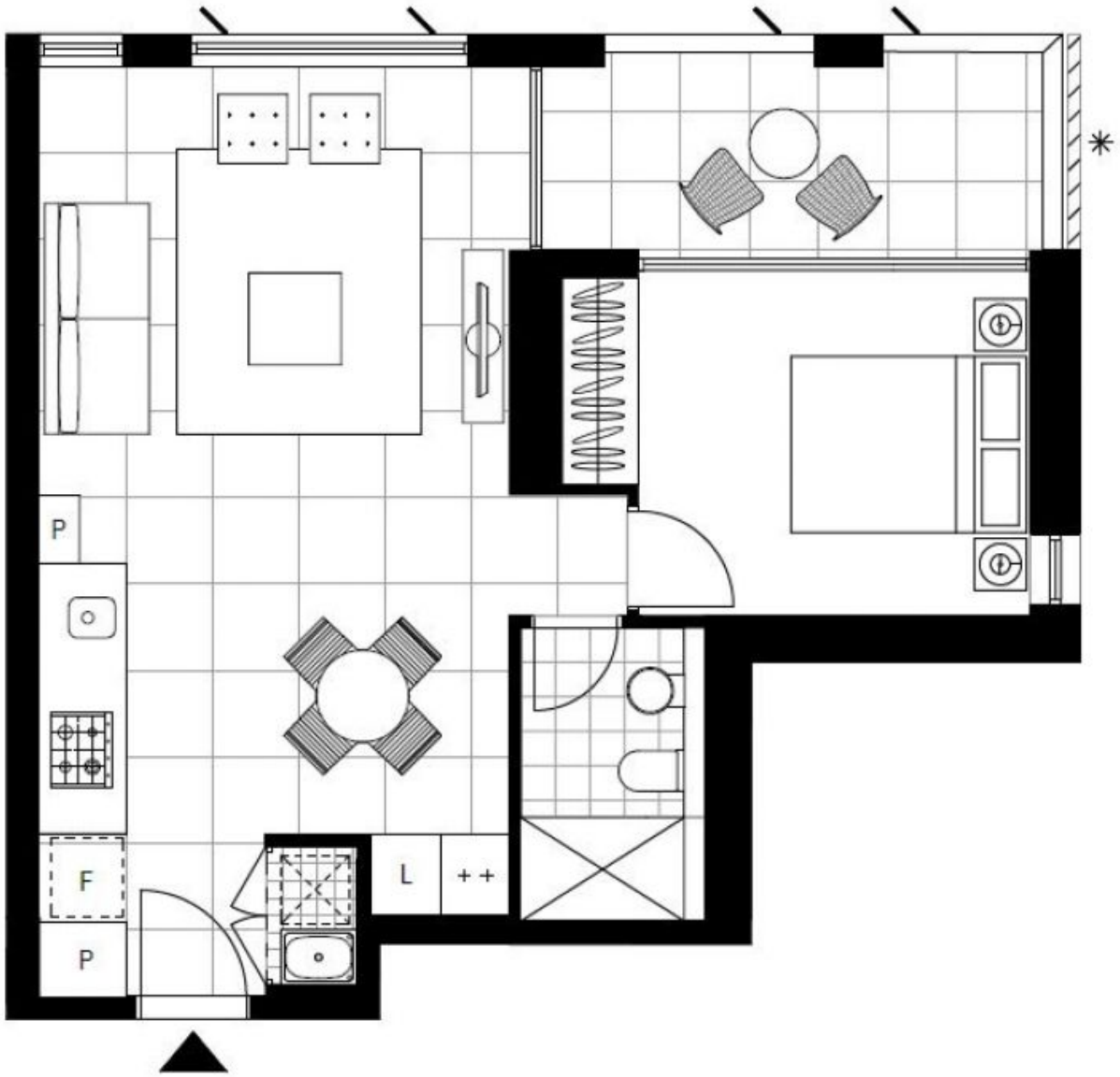
DEPOSIT TAKEN | Cancelled Inspection

Contact: Kevin Tam
02 8588 8888
0481735222
Georgia Glynn
02 8588 8888
0481 388 777

Type: Apartment

Date Available: 15/04/2024

<https://www.resbymirvac.com>



Plans shown are only indicative of layout. Dimensions are approximate.

Zetland, NSW
409/8 Ebsworth Street