



RES real estate services by mirvac



RES real estate services by mirvac



Sydney Olympic Park, NSW

10406/2 Figtree Drive

1 BED 1 BATH 1 CAR RES

Premium 1 Bedroom + Media Apartment - With Parking!

This 59sqm, 1-Bedroom Plus Media Apartment features:

- Spacious bedroom with generous built-in wardrobes
- Open-plan living and dining area, leading to the balcony
- Contemporary kitchen with stone benchtop and Smeg appliances
- Sleek bathroom with generous vanity storage
- North-facing sunny balcony, perfect for entertaining
- Internal laundry with dryer included
- Media area included, perfect for a home office
- Secure car space and storage cage included
- Ducted A/C, video intercom and NBN connectivity
- Resident access to gym, community room and open BBQ area

\$660 per week | Deposit Taken on First Inspection!

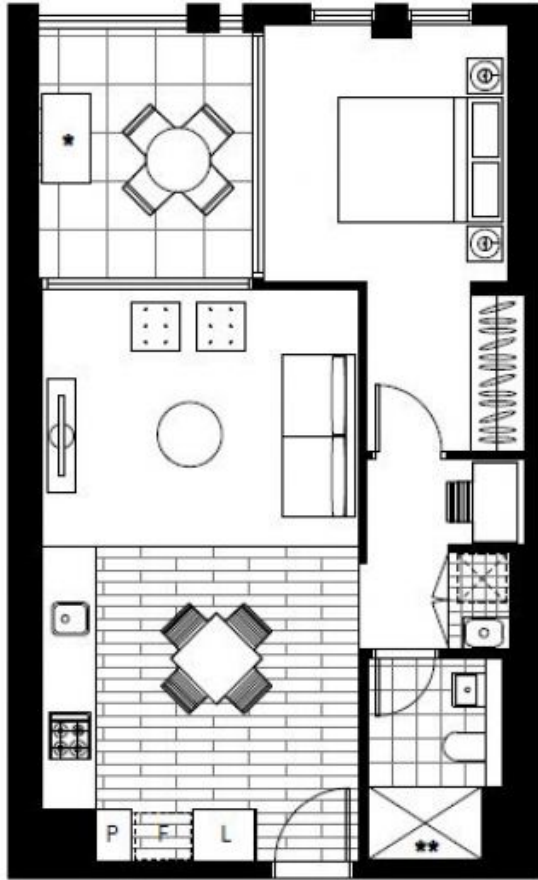
Contact: Renee Zhang
02 8588 8888
0481440088

Type: Apartment

Date Available: 27/03/2024

Bond: \$2640

<https://www.resbymirvac.com>



Plans shown are only indicative of layout. Dimensions are approximate.

Sydney Olympic Park, NSW
10406/2 Figtree Drive