

**Glebe, NSW**  
513/2 Scotsman Street

**2** **2** **1**  
BED BATH CAR



### **Stunning North-Facing 2-Bedroom Apartment in Mirvac's Harold Park!**

Welcome to Harold Park, Glebe!

Here in Harold Park you will find yourself in an idyllic Parkside location, with only a short walk to Glebe Foreshore. Just meters away, The Tramsheds retail precinct resides featuring cafes, a grocery store, restaurants and a medical centre.

This 5th floor apartment features:

- Spacious bedrooms with generous/floor-to-ceiling built-in wardrobes
- Flowing open-plan living and dining area, with access to North-facing balcony
- Contemporary kitchen with island stone benchtop and built-in Miele appliances

### **Deposit Taken!**

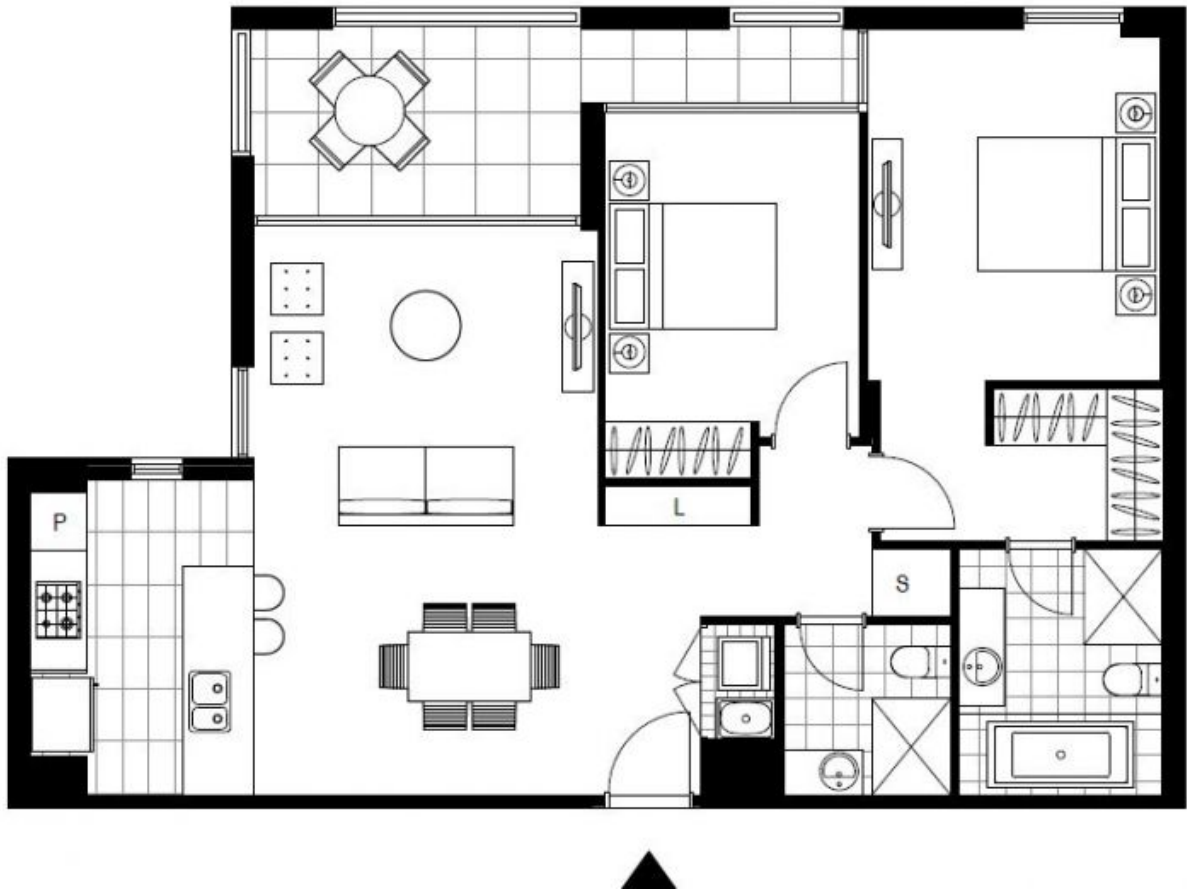
**Contact:** Naz Sabzpouri  
02 8588 8888  
0401 545 440

**Type:** Apartment

**Date Available:** 26/04/2024

**Bond:** \$4800

<https://www.resbymirvac.com>



Plans shown are only indicative of layout. Dimensions are approximate.

**Glebe, NSW**  
513/2 Scotsman Street