



East Melbourne, VIC
203/280 Albert Street

2 BED **2** BATH **2** CAR 

Effortless Elegance in this GRAND 2Bedroom apartment at 'The Eastbourne'

A rare lifestyle in front of the Fitzroy Gardens in a neighbourhood of distinction, its location is exceptional - a heartbeat away from the city, yet feels like a million miles away.

Originally sold as a 3- bedroom apartment in the prestigious 'The Eastbourne', this apartment was configured into a 2- bedder to meet the needs of its owners. It is one of the largest 2-Bedroom apartments within the complex and has a unique and well-designed floor plan.

Apartment Features:

- ? 'Expansive open living/dining room with plush carpet flows throughout
- ? Alfresco entertaining terrace with amazing city & park views

\$1,550 per week

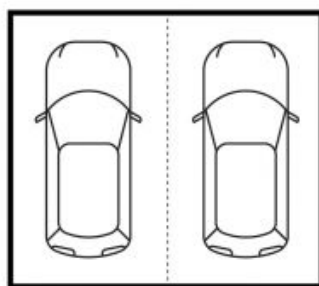
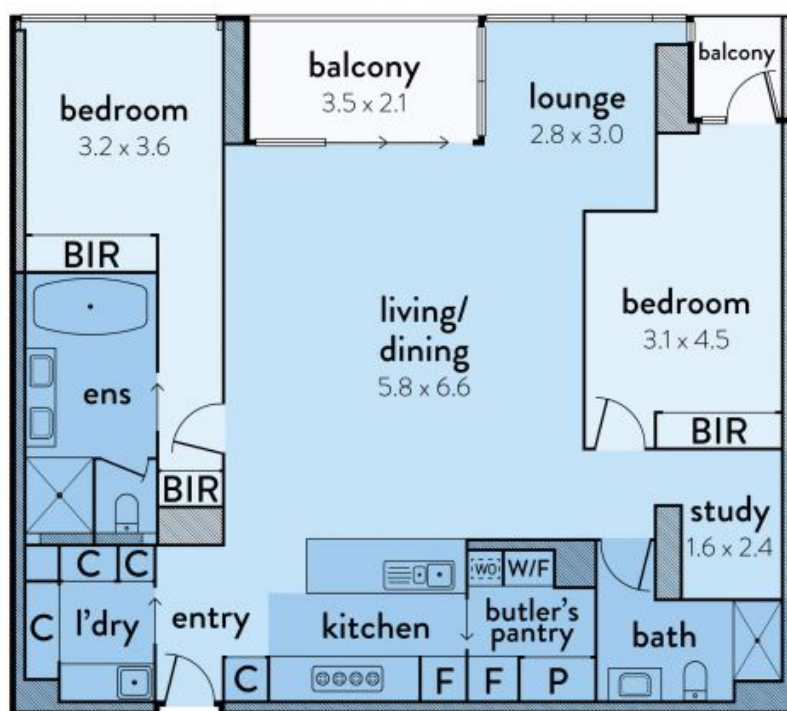
Contact: Aleiasha Clark
03 9645 1199
0491 174 507

Type: Apartment

Date Available: 19/04/2024

<https://www.resbymirvac.com>

203/280 ALBERT STREET, EAST MELBOURNE



carspaces
(not in position)



(not in position)



Plans shown are only indicative of layout. Dimensions are approximate.

The above plan is an artist's impression only, it includes elements that are for display purposes and may not be to scale. Dimensions are approximate and every care has been taken to verify the accuracy of details.

East Melbourne, VIC
203/280 Albert Street