



## Zetland, NSW

303/32 Ebsworth Street

**1**  
BED

**1**  
BATH



### Generous 1 Bedroom Apartment in Green Square's Newest Building, 'Portman House'

Welcome to Portman House by Mirvac

Contemporary meets Art Deco at Portman House. This sophisticated residence offers a haven comfort and calm. Occupying a privileged parkside position at Green Square, it is close to an abundance of places to meet, play, work and learn while being conveniently located between Sydney Airport and the CBD.

This spacious, North-West facing apartment features:

- Luxuriously carpeted bedroom with built-in wardrobes & access to balcony

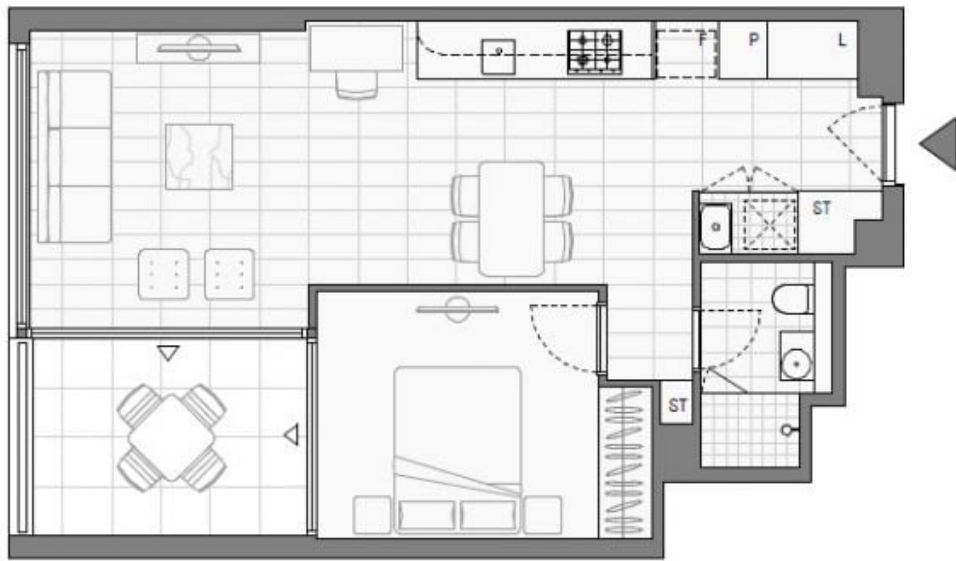
**\$950pw | Leased first inspection!**

**Contact:** Kevin Tam  
02 8588 8888  
0481 735 222

**Type:** Apartment

**Date Available:** 23/03/2024

**<https://www.resbymirvac.com>**



Plans shown are only indicative of layout. Dimensions are approximate.

**Zetland, NSW**  
303/32 Ebsworth Street