



Glebe, NSW

102/159 Ross Street

3 BED **2** BATH **2** CAR 

Stunning Park Facing Three Bedroom in Harold Park

Welcome to Harold Park, Glebe!

Here in Harold Park you will find yourself in an idyllic parkside location, with only a short walk to Glebe Foreshore. Just meters away, The Tramsheds retail precinct resides featuring cafes, a grocery store, restaurants and a medical centre.

This stunning three bedroom has to offer;

- Functional living and dining areas, with access to the balcony
- Large North-East facing balcony overlooking the park with private access
- Quality kitchen with stone benchtops and built-in Miele appliances
- Well-appointed bedrooms with generous built-in wardrobes

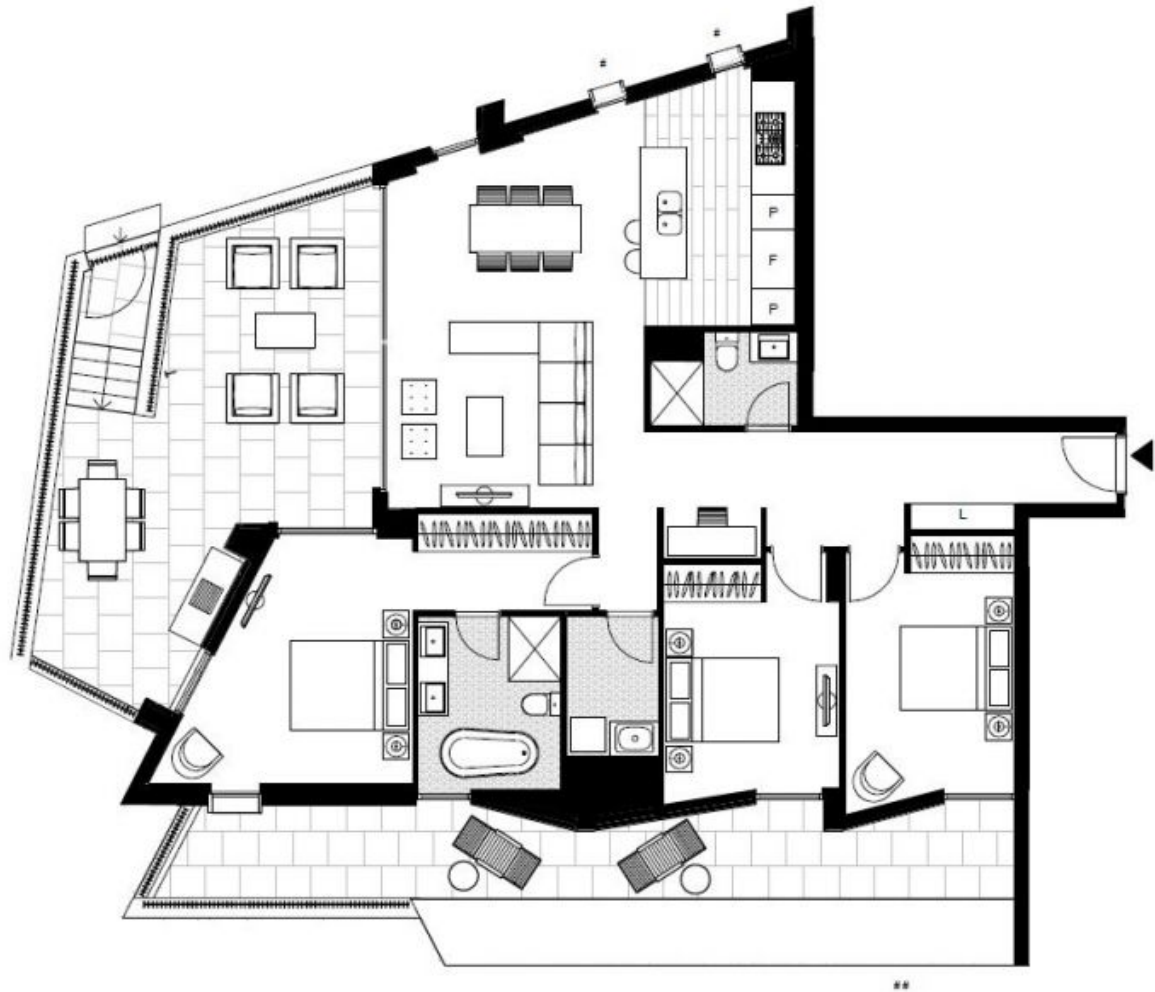
\$1600 per week | Park Facing

Contact: Naz Sabzpour
02 8588 8888
0401 545 440

Type: Terrace

Date Available: 09/04/2024

<https://www.resbymirvac.com>



LEVEL 1

Plans shown are only indicative of layout. Dimensions are approximate.

Glebe, NSW
102/159 Ross Street