



Sydney Olympic Park, NSW
20505/2 Figtree Drive

1 BED **1** BATH **1** CAR



Premium 1 Bedroom Apartment in Mirvac's Pavilions with Parking

Welcome to Pavilions in Sydney Olympic Park

Discover the unparalleled allure of Sydney Olympic Park, where Pavilions by Mirvac offers a lifestyle of convenience and luxury. Nestled amidst vibrant parklands, trendy cafes, and world-class sporting facilities, residents enjoy proximity to an array of amenities. As a resident of Pavilions by Mirvac, you'll have exclusive access to a gym, co-working space, and a dedicated children's play area, ensuring every aspect of your lifestyle is catered to with style and sophistication.

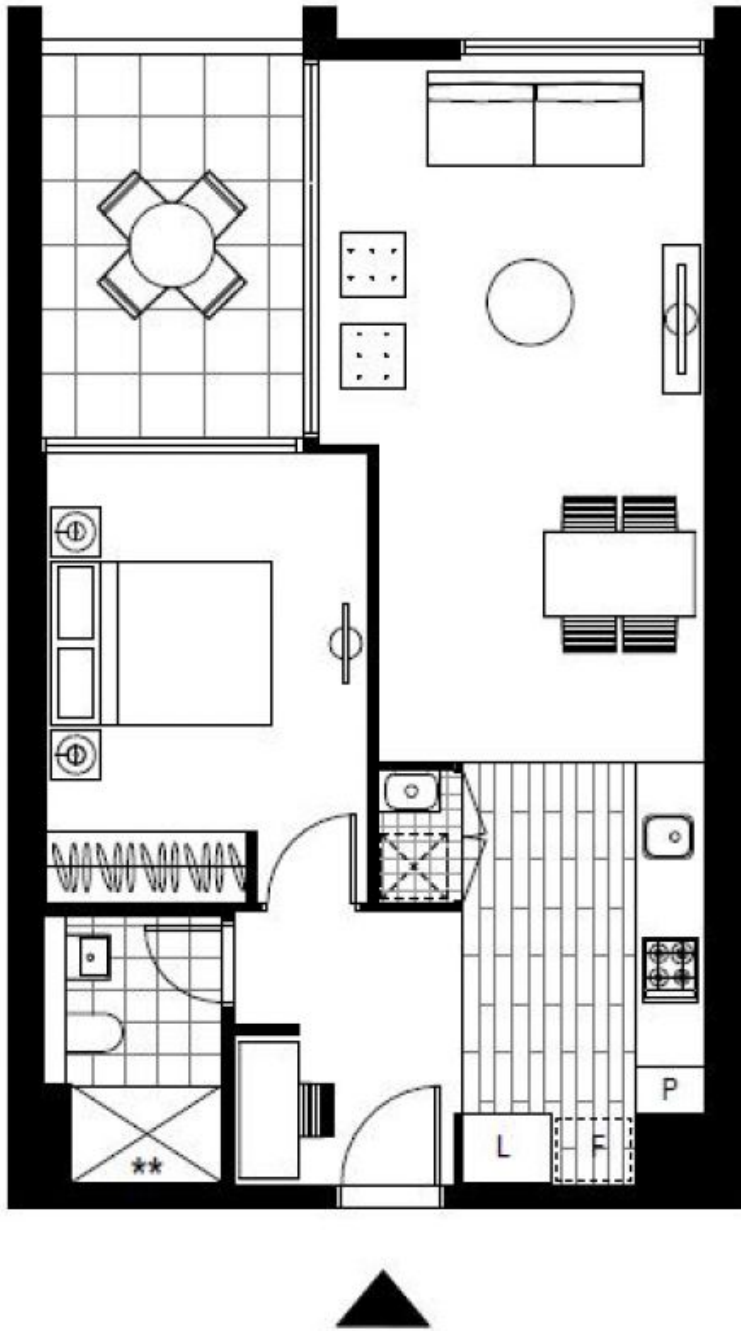
This 63sqm, 1-Bedroom Apartment features:

\$660 per week | Deposit Taken on First Inspection!

Contact: Renee Zhang
02 8588 8888
0481 440 088

Type: Apartment
Date Available: 27/03/2024

Bond: \$2640
<https://www.resbymirvac.com>



Plans shown are only indicative of layout. Dimensions are approximate.

Sydney Olympic Park, NSW
20505/2 Figtree Drive