



Zetland, NSW
1005/32 Ebsworth Street

2 BED **2** BATH **1** CAR



Urban Meets Luxe Living in North Facing 2 Bedroom Apartment in Portman House by Mirvac

Welcome to Portman House by Mirvac

Contemporary meets Art Deco at Portman House. This sophisticated residence offers a haven comfort and calm. Occupying a privileged parkside position at Green Square, it is close to an abundance of places to meet, play, work and learn while being conveniently located between Sydney Airport and the CBD.?

This 10th floor apartment features:

- Two bedrooms with built-in wardrobes
- Functional open-plan living area, tiled, with sheer curtains throughout

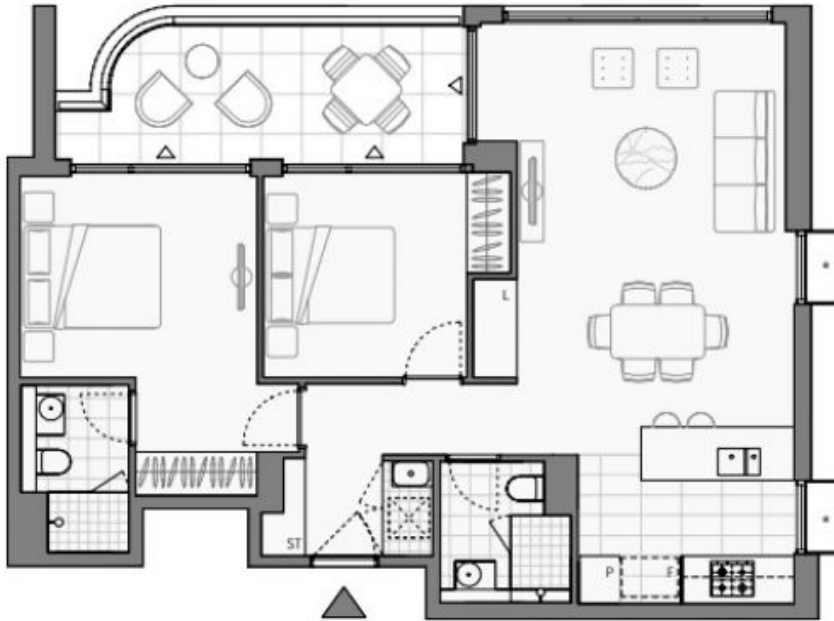
\$1500 per week | Brand new with city views!

Contact: Kevin Tam
02 8588 8888
0481 735 222
Georgia Glynn
02 8588 8888
0481 388 777

Type: Apartment

Date Available: 27/03/2024

<https://www.resbymirvac.com>



Plans shown are only indicative of layout. Dimensions are approximate.

Zetland, NSW
1005/32 Ebsworth Street