



**Zetland, NSW**  
1101/32 Ebsworth Street

<b>3</b> BED	<b>2</b> BATH	<b>2</b> CAR	
-----------------	------------------	-----------------	---

**Designer 3 Bedroom Apartment with Expansive Terrace in Newest Green Square Building, 'Portman House'**

Welcome to Portman House by Mirvac

Contemporary meets Art Deco at Portman House. This sophisticated residence offers a haven comfort and calm. Occupying a privileged parkside position at Green Square, it is close to an abundance of places to meet, play, work and learn while being conveniently located between Sydney Airport and the CBD.?

This 146sqm, 11th floor apartment features:

- Three well-appointed bedrooms with built-in wardrobes

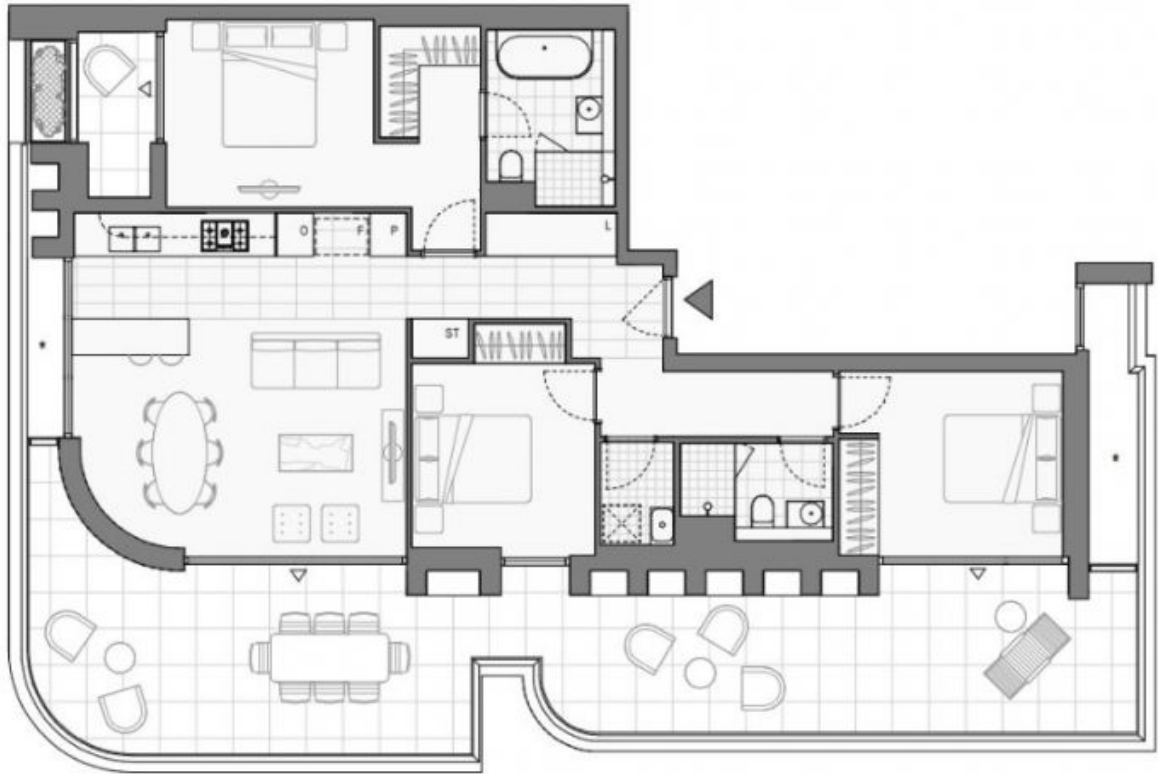
**More brand new apartments coming soon!**

**Contact:** Kevin Tam  
02 8588 8888  
0481735222

**Type:** Apartment

**Date Available:** 23/03/2024

**<https://www.resbymirvac.com>**



Plans shown are only indicative of layout. Dimensions are approximate.

**Zetland, NSW**  
1101/32 Ebsworth Street