



Zetland, NSW

705/32 Ebsworth Street

2 **2** **1**
BED BATH CAR



Brand New North-Facing 2 Bedroom Apartment with EV Charging in Newest Building in Green Square, 'Portman House'

Welcome to Portman House by Mirvac

Contemporary meets Art Deco at Portman House. This sophisticated residence offers a haven comfort and calm. Occupying a privileged parkside position at Green Square, it is close to an abundance of places to meet, play, work and learn while being conveniently located between Sydney Airport and the CBD.?

This brand new apartment features:

- Well-appointed living and dining area, flowing onto balcony

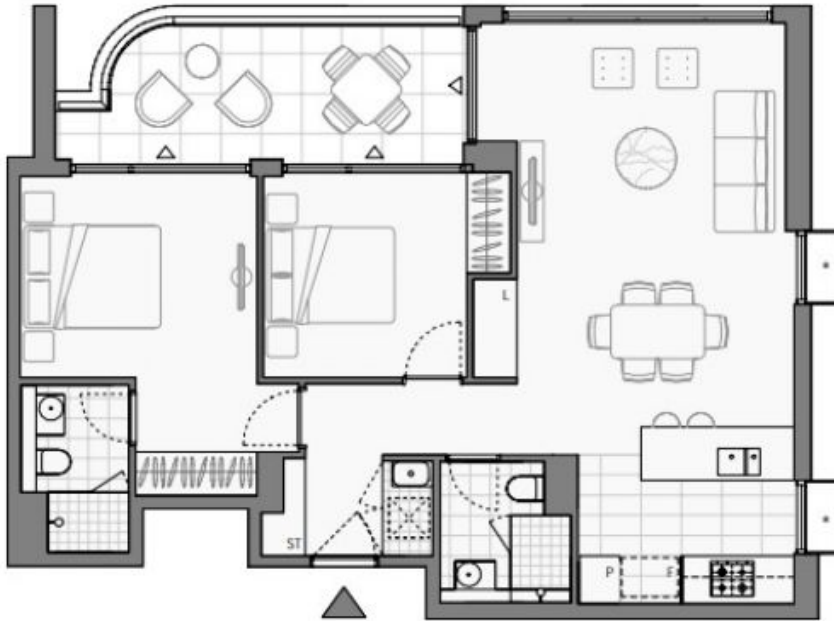
\$1,490pw | Deposit Taken!

Contact: Kevin Tam
02 8588 8888
0481 735 222

Type: Apartment

Date Available: 23/03/2024

<https://www.resbymirvac.com>



Plans shown are only indicative of layout. Dimensions are approximate.

Zetland, NSW
705/32 Ebsworth Street