

Glebe, NSW
220/1A The Crescent

2 BED **2** BATH **1** CAR 

Sunny 2 Bedroom Apartment in the Heart of Mirvac's Harold Park

Welcome to Harold Park, Glebe's Secret Backyard.

Here in Harold Park you will find yourself in an idyllic parkside location, with only a short walk to Glebe Foreshore. Just meters away, The Tramsheds retail precinct resides featuring cafes, a grocery store, restaurants and a medical centre.

This 2nd floor, 2 bedroom apartment features:

- Generous bedrooms with floor-to-ceiling built-in wardrobes
- Open plan living and dining area, with access to sunny balcony
- Modern island kitchen with stone benchtops and built-in Miele appliances

\$1,150 per week | Parking Included!

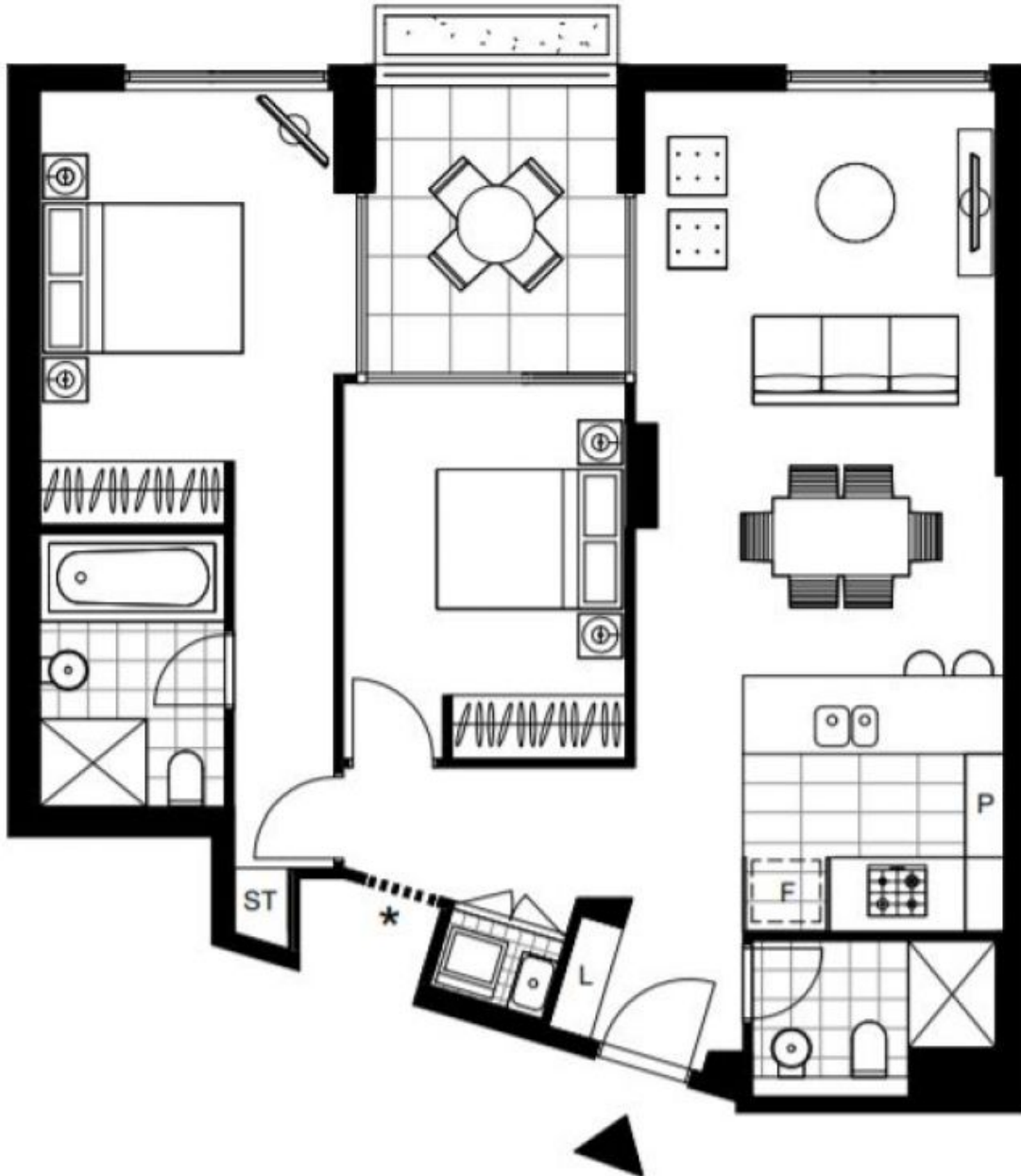
Contact: Naz Sabzpouri
02 8588 8888
0401 545 440

Type: Apartment

Date Available: 09/02/2024

Bond: \$4600

<https://www.resbymirvac.com>



Plans shown are only indicative of layout. Dimensions are approximate.

Glebe, NSW
220/1A The Crescent