



Disclaimer: Images are of the onsite display apartment and are indicative only.

RES real estate services by mirvac



RES real estate services by mirvac



Zetland, NSW

407/28 Zetland Avenue

1 BED 1 BATH



Sophisticated Park Facing Apartment in Highly Anticipated 'The Frederick' by Mirvac

Welcome to The Frederick by Mirvac.

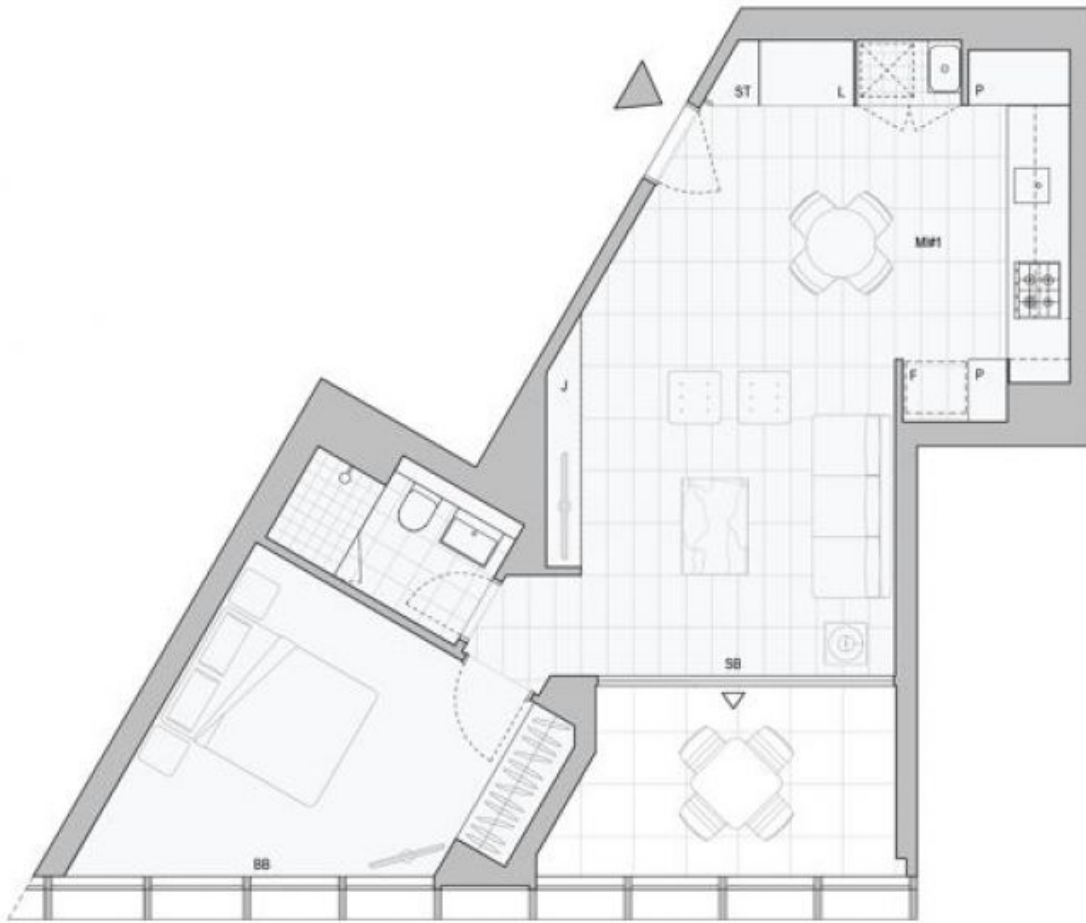
Found in one of Sydney's fastest growing residential precincts, The Frederick is perfectly situated amongst the nearly completed Drying Green parkland, Green Square Train Station, Green Square Library and Gunyama Aquatic and Recreation Centre. You will also find yourself within minutes of shops, schools, child care centres, restaurants, cafes and parklands. Residents will also enjoy exclusive access to world-class amenities such as a wellness studio and gym, business centre and sky lounge.?

This 60sqm, 1 bedroom apartment features:

DEPOSIT TAKEN

Contact: Kevin Tam
02 8588 8888
0481 735 222

Type: Apartment
Date Available: 22/12/2023
<https://www.resbymirvac.com>



Plans shown are only indicative of layout. Dimensions are approximate.

Zetland, NSW
407/28 Zetland Avenue