



\*Disclaimer: Images are of the onsite display apartment and are indicative only.\*



**Zetland, NSW**  
407/28 Zetland Avenue

**1** BED **1** BATH

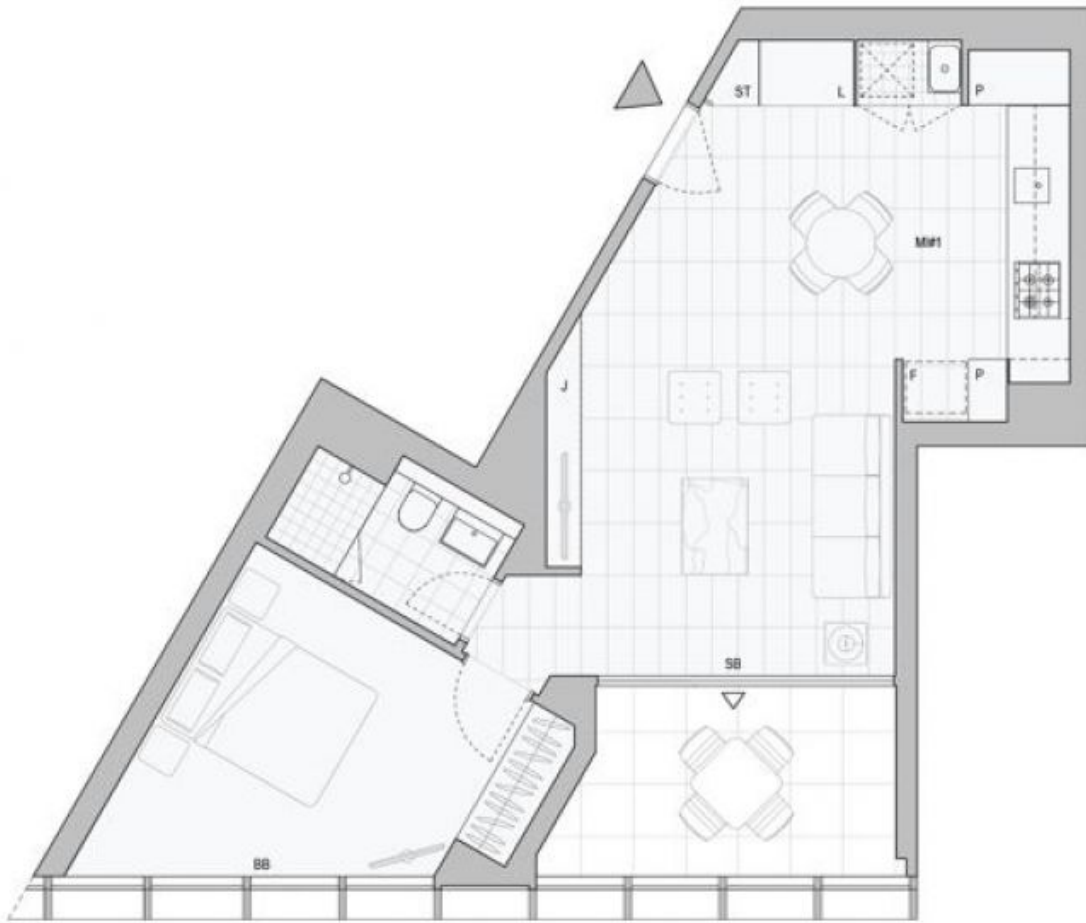


**Sophisticated Park Facing Apartment in Highly Anticipated 'The Frederick' by Mirvac**  
Welcome to The Frederick by Mirvac.

Found in one of Sydney's fastest growing residential precincts, The Frederick is perfectly situated amongst the nearly completed Drying Green parkland, Green Square Train Station, Green Square Library and Gunyama Aquatic and Recreation Centre. You will also find yourself within minutes of shops, schools, child care centres, restaurants, cafes and parklands. Residents will also enjoy exclusive access to world-class amenities such as a wellness studio and gym, business centre and sky lounge.?

**DEPOSIT TAKEN**  
**Contact:** Kevin Tam  
02 8588 8888  
0481735222  
**Type:** Apartment  
**Date Available:** 22/12/2023  
<https://www.resbymirvac.com>

This 60sqm, 1 bedroom apartment features:



Plans shown are only indicative of layout. Dimensions are approximate.

**Zetland, NSW**  
407/28 Zetland Avenue