

**Zetland, NSW**  
1306/28 Zetland Avenue

**3** BED **2** BATH **1** CAR 

**Sophisticated Urban Living in 3 Bedroom Apartment with Park Views in 'The Frederick' by Mirvac**

Welcome to The Frederick by Mirvac.

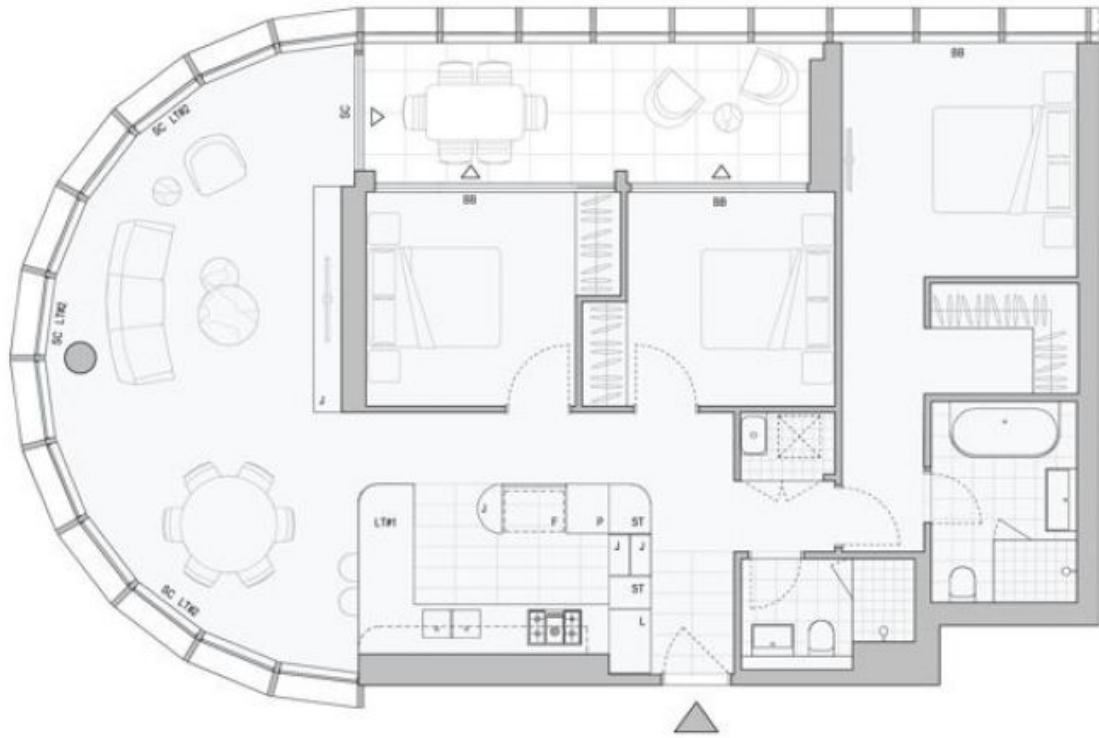
Found in one of Sydney's fastest growing residential precincts, The Frederick is perfectly situated amongst the nearly completed Drying Green parkland, Green Square Train Station, Green Square Library and Gunyama Aquatic and Recreation Centre. You will also find yourself within minutes of shops, schools, child care centres, restaurants, cafes and parklands. Residents will also enjoy exclusive access to world-class amenities such as a wellness studio and gym, business centre and sky lounge.?

This 119sqm, 13th floor apartment features:

**DEPOSIT TAKEN**

**Contact:** Kevin Tam  
02 8588 8888  
0481 735 222

**Type:** Apartment  
**Date Available:** 23/12/2023  
**<https://www.resbymirvac.com>**



Plans shown are only indicative of layout. Dimensions are approximate.

**Zetland, NSW**  
1306/28 Zetland Avenue