



Docklands, VIC

160 Lorimer Street



One Of A Kind Floorplan For Your Luxury Forge Living

This unique, oversized townhouse-like apartment boasts an expansive 111sqm of internal living space to live and entertain in the prestige Forge Apartments at Yarras Edge by Mirvac.

PROPERTY FEATURES:

- ? Expansive, light-filled open plan living and dining
- ? Centrally located kitchen with island bench and Smeg appliances
- ? Private street entry, plus secure parking with direct apartment access
- ? Oversized bedroom with dual entry and built-in robes
- ? Designer finishes in the bathroom
- ? Expansive storage cupboards, oversized European laundry
- ? Access to the Wharf Club's state-of-the-art health and wellbeing facility with gym, pool and spa

Contact Agent

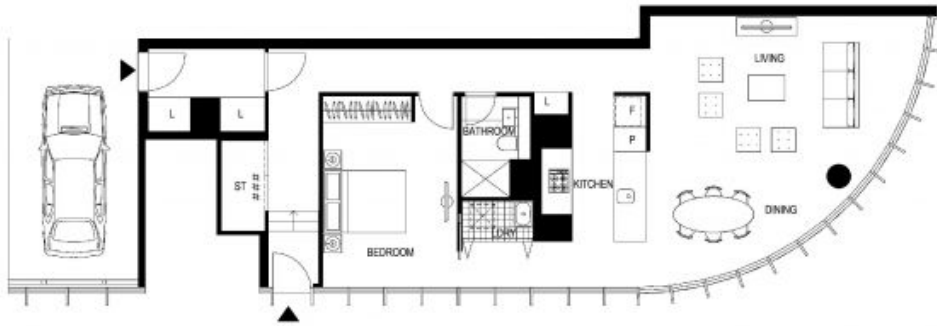
Council Rates: \$1,400/year (approx)

View: Thu, 23 May 2024 @ 12:00 pm - 12:20 pm

Contact: Andrew Chen
03 9645 1199
0490 816 861
Joe Qiao
03 9645 1199
0408 288 542

Type: Apartment

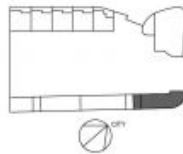
<https://www.resbymirvac.com>



LEVEL 1

APT 1.08

LOCATION PLAN



ARTISTS STUDIO
1 BEDROOM

Internal Area 111 m²
Balcony Area
Total Area 111 m²

Areas subject to final survey, areas include balcony
and/or terrace where applicable. It includes parking
and external storage areas.



Please note that this floor plan was produced prior to completion of construction. The information contained herein is believed to be correct but is not guaranteed. Dimensions and areas are approximate and errors are calculated in accordance with the Property Council of Australia Method of Measurement. Changes in understanding, needs during development and subject to change without notice if accordance with the provisions of the contract for sale, Applicant/owner is liable for the cost of any such variations.

Water, gas and electricity connections are not included with this unit and plumbing should not be altered. Indicate the frequency of power points, TV connections and the like, prospective purchasers must refer to the contract for sale for details of inclusions, appliances, including the hood, cabinet, bench, shelving, sinks and built-in appliances, etc. included only.

NOTE: Balcony enclosure for residents are not included. These plans are at an uncompleted state. Plans do not show additional features which may be such as hot water systems, security panels, fire alarms and so on and their inclusion depends on the owner's option which on how plans is implemented later on only and is available at purchaser cost only at time of sale.

2020/11/24

Low head height

For further enquiries
call 03 9695 9400 or visit
www.mirvac.com/forge



Plans shown are only indicative of layout. Dimensions are approximate.

Docklands, VIC
160 Lorimer Street