



## Glebe, NSW

209/1 Cullen Close

**1** BED **1** BATH **1** CAR 

### 1-Bedroom Apartment with Parking Harold Park

Welcome to Harold Park, Glebe's Secret Backyard.

Here in Harold Park you will find yourself in an idyllic parkside location, with only a short walk to Glebe Foreshore. Just meters away, The Tramsheds retail precinct resides featuring cafes, a grocery store, restaurants and a medical centre.

This 64sqm, 2nd floor apartment features:

- Well-appointed bedroom with floor-to-ceiling built-in wardrobe
- Spacious open-plan living and dining area
- Sleek kitchen with stone benchtop and built-in Miele appliances
- Modern bathroom with plenty of generous storage

**\$800 per week | Deposit Taken**  
**Parking Included!**

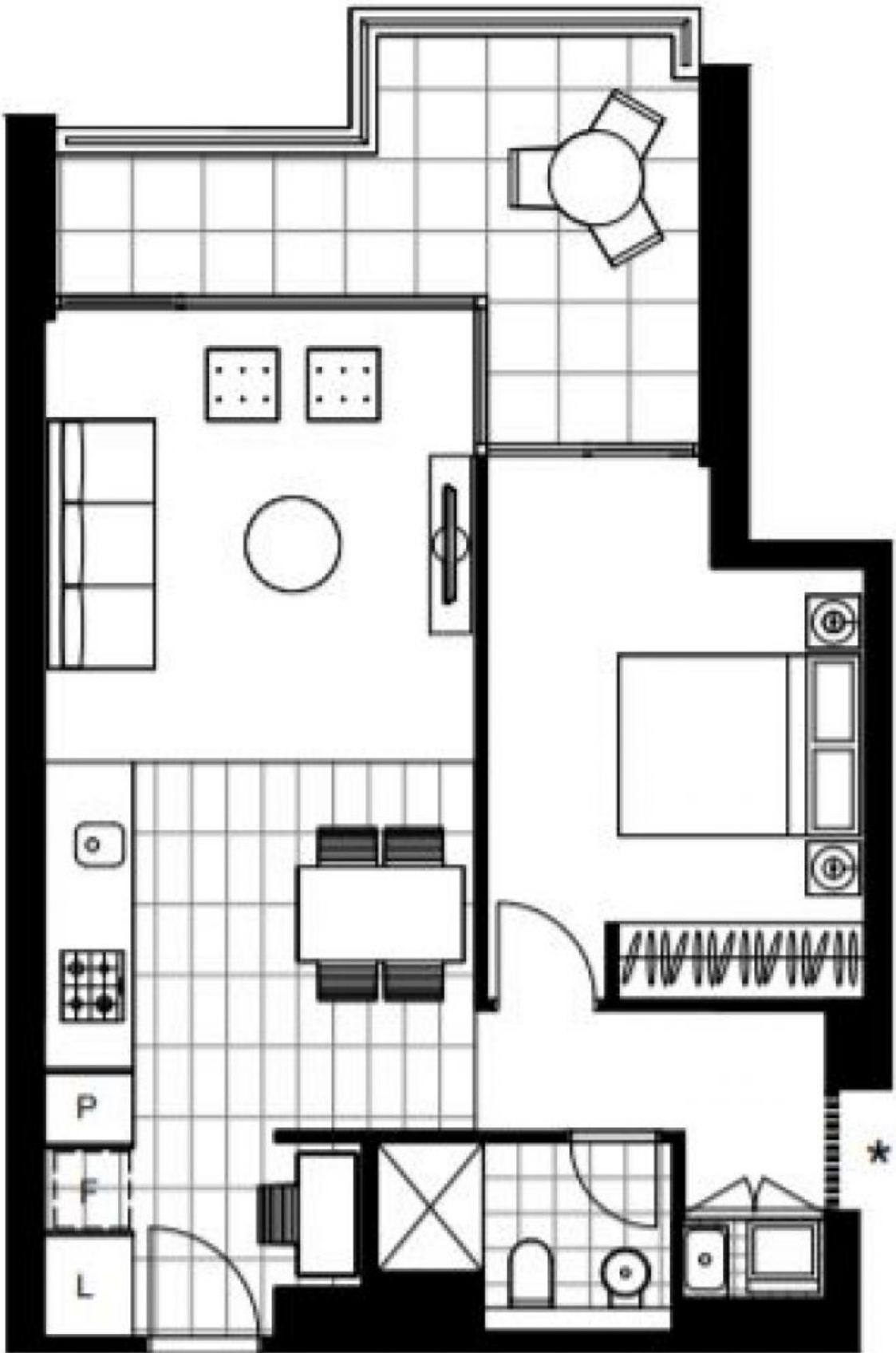
**Contact:** Naz Sabzpouri  
02 8588 8888  
0401 545 440

**Type:** Apartment

**Date Available:** 03/01/2024

**Bond:** \$3120

<https://www.resbymirvac.com>



Plans shown are only indicative of layout. Dimensions are approximate.

**Glebe, NSW**  
209/1 Cullen Close