



Glebe, NSW

509/1 Cullen Close

1
BED

1
BATH



Modern 1 Bedroom Apartment in Harold Park

Welcome to Harold Park, Glebe's Secret Backyard.

Here in Harold Park you will find yourself in an idyllic parkside location, with only a short walk to Glebe Foreshore. Just meters away, The Tramsheds retail precinct resides featuring cafes, a grocery store, restaurants and a medical centre.

\$780 per week without parking or \$830pw with parking*

This 5th floor apartment features:

- Spacious bedroom with floor-to-ceiling built-in wardrobes
- Open-plan & functional living and dining area, with access to a generous balcony

Deposit Taken

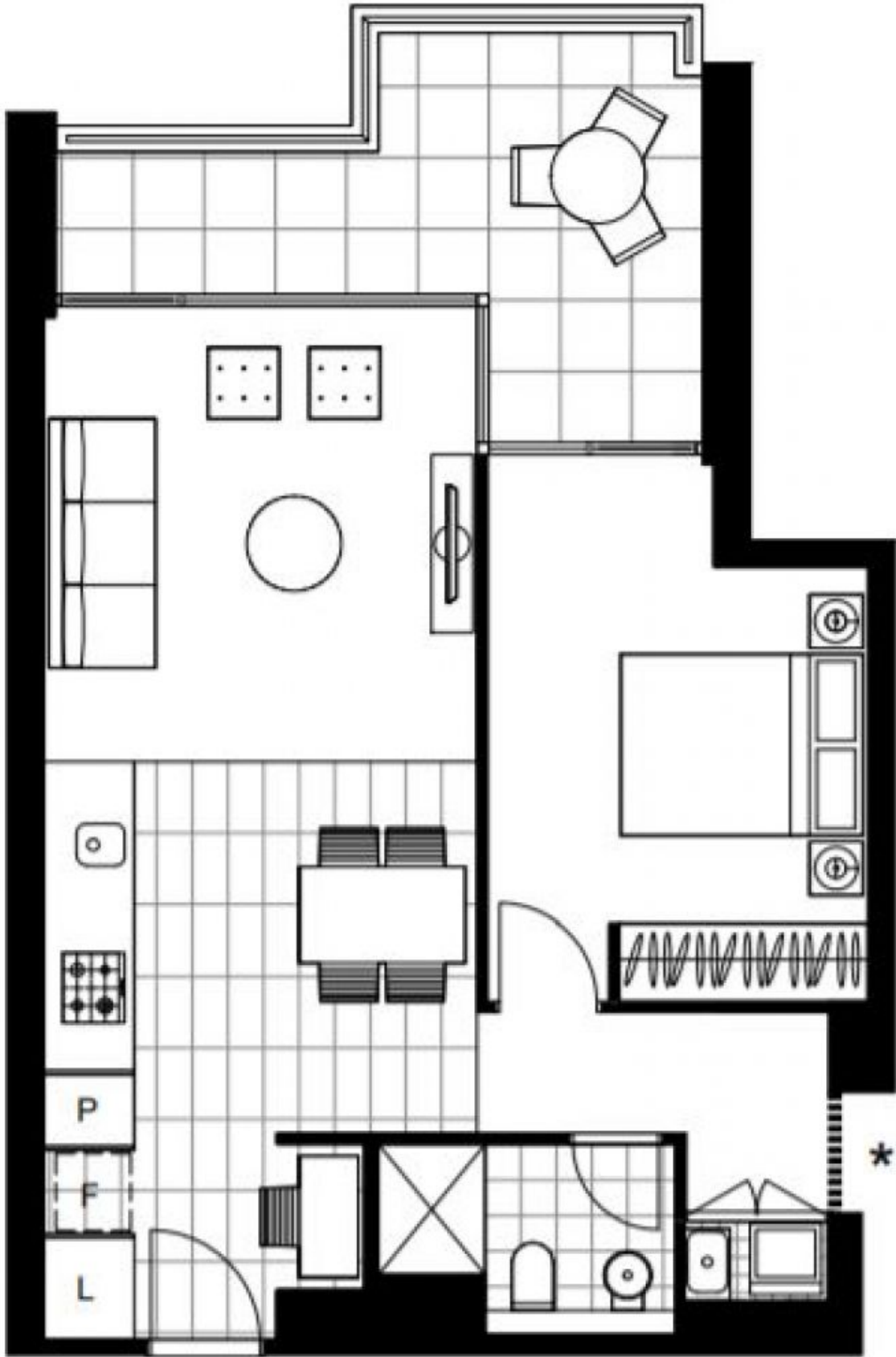
Contact: Naz Sabzpouri
02 8588 8888
0401 545 440

Type: Apartment

Date Available: 20/12/2023

Bond: \$3120

<https://www.resbymirvac.com>



Plans shown are only indicative of layout. Dimensions are approximate.

Glebe, NSW
509/1 Cullen Close