



Glebe, NSW

415/1A The Crescent

2 BED **2** BATH **1** CAR 

Premium 2 Bedroom Apartment with Parking in Harold Park

Welcome to Harold Park, Glebe!

Here in Harold Park, you will find yourself in an idyllic parkside location, with only a short walk to Glebe Foreshore. Just meters away, The Tramsheds retail precinct resides featuring cafes, a grocery store, restaurants and a medical centre.

This 118sqm, 4th floor apartment features:

- Spacious bedrooms with generous built-in wardrobes
- Open-plan living and dining area, leading to the balcony
- Contemporary kitchen with island stone benchtop and Miele appliances
- Sleek bathrooms with generous storage, bath in ensuite

Deposit Taken!

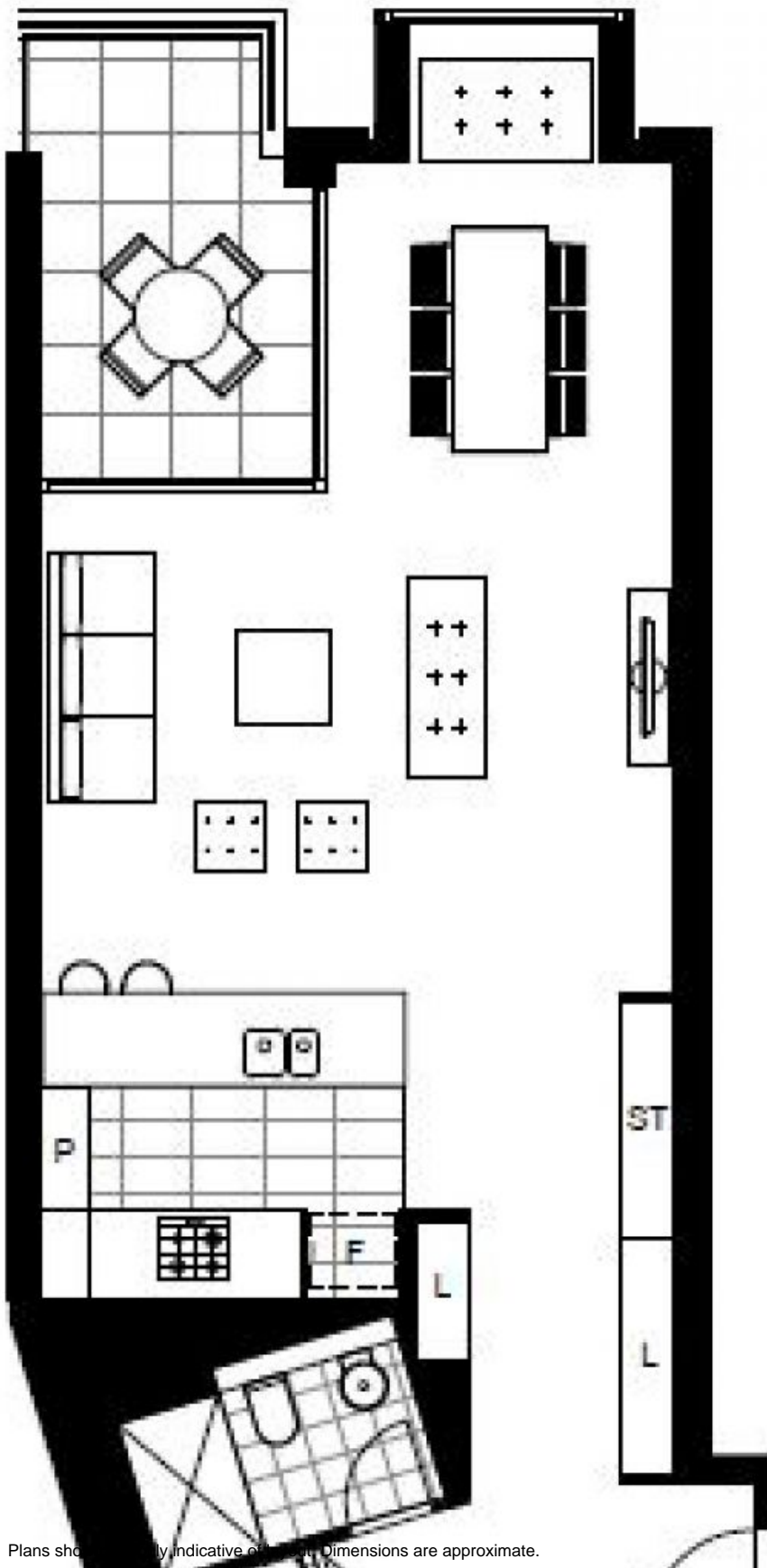
Contact: Naz Sabzpouri
02 8588 8888
0401 545 440

Type: Apartment

Date Available: 07/12/2023

Bond: \$4600

<https://www.resbymirvac.com>



Plans shown are only indicative of layout. Dimensions are approximate.

Glebe, NSW
415/1A The Crescent