



Docklands, VIC

2105/100 Lorimer Street

2
BED

1
BATH

1
CAR



Affordable & Smart Choice For Your Yarras' Edge Lifestyle/Sold Off Market

Contemporary waterfront-facing 2 bedrooms Mirvac development offering generous living and dining area, and a gourmet kitchen complete with Miele stainless steel appliances.

The panoramic view of the uninterrupted city skyline from a wraparound balcony overlooks all that Docklands has to offer. Occupants can lean back and enjoy a cup of tea on the alfresco balcony. Floor-to-ceiling windows provide a sense of openness and enable natural skylight to flow into the apartment.

Exclusive on-site gym, residence lounge and concierge. Residents also have access to the RekDek boasting an indoor pool, spa and steam room. The apartment offers central heating and cooling system, 1 secure car space and a secure video intercom entry system.

\$580,000

Contact:

Andrew Chen
03 9645 1199
0490 816 861
Joe Qiao
03 9645 1199
0408 288 542

Type:

Apartment

Sold Date:

27/11/2023

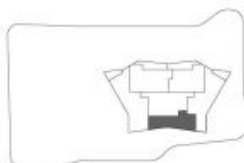
<https://www.resbymirvac.com>



LEVEL 21,22,23,24,25,26,27,28,29,30,31,32,33

APT 21.05
APT 22.05
APT 23.05
APT 24.05
APT 25.05
APT 26.05
APT 27.05
APT 28.05
APT 29.05
APT 30.05
APT 31.05
APT 32.05
APT 33.05

LOCATION PLAN



Level 21 shown

TOWER 2 BEDROOM

Internal Area 78 m²
Balcony Area 1 m²
Total Area 79 m²

Areas subject to final survey, area includes balcony and/or terrace where applicable. It excludes parking and external storage areas.



Please note that this floor plan is a guide only and was prepared prior to completion. The information contained herein is believed to be correct but is not guaranteed. Dimensions are approximate and areas are calculated in accordance with the Property Council of Australia Method of Measurement. Bedroom dimensions are taken from the front of the room. Balcony / Terrace dimensions are taken from the outer edge of the kitchen island bench. Colors are indicative only and are subject to change without notice. Changes will be made during the development process. Changes will be made during the development process. Changes will be made during the development process.

For further enquiries call 03 9645 9400 or visit arraybymirvac.com

Plans shown are only indicative of layout. Dimensions are approximate.

Docklands, VIC
2105/100 Lorimer Street