



Docklands, VIC

1408/81 South Wharf Drive

1 BED **1** BATH **1** CAR



A lifestyle approach with 1-bedroom and bay views

Expansive one-bedroom apartment with winter garden will impress lovers of Docklands, Yarras Edge. An exciting open plan living and kitchen area offering one of the best 1-bedroom floorplans South Wharf Drive has!

- Open plan living with natural light throughout
- Kitchen area with Smeg appliances and splashback
- Perfectly positioned winter garden, south-east-facing bay views
- Bathroom with highly detailed lighting throughout, light scheme
- Large bedroom with extra extension for built-in-robe
- Secure intercom and secure car space on L4
- Ducted heating and cooling throughout
- Access to Wharfs Club inclusive of gym, pool, steam room & sauna
- Stroll to South Wharf DFO, eateries, bars, waterside cafe's

\$470,000

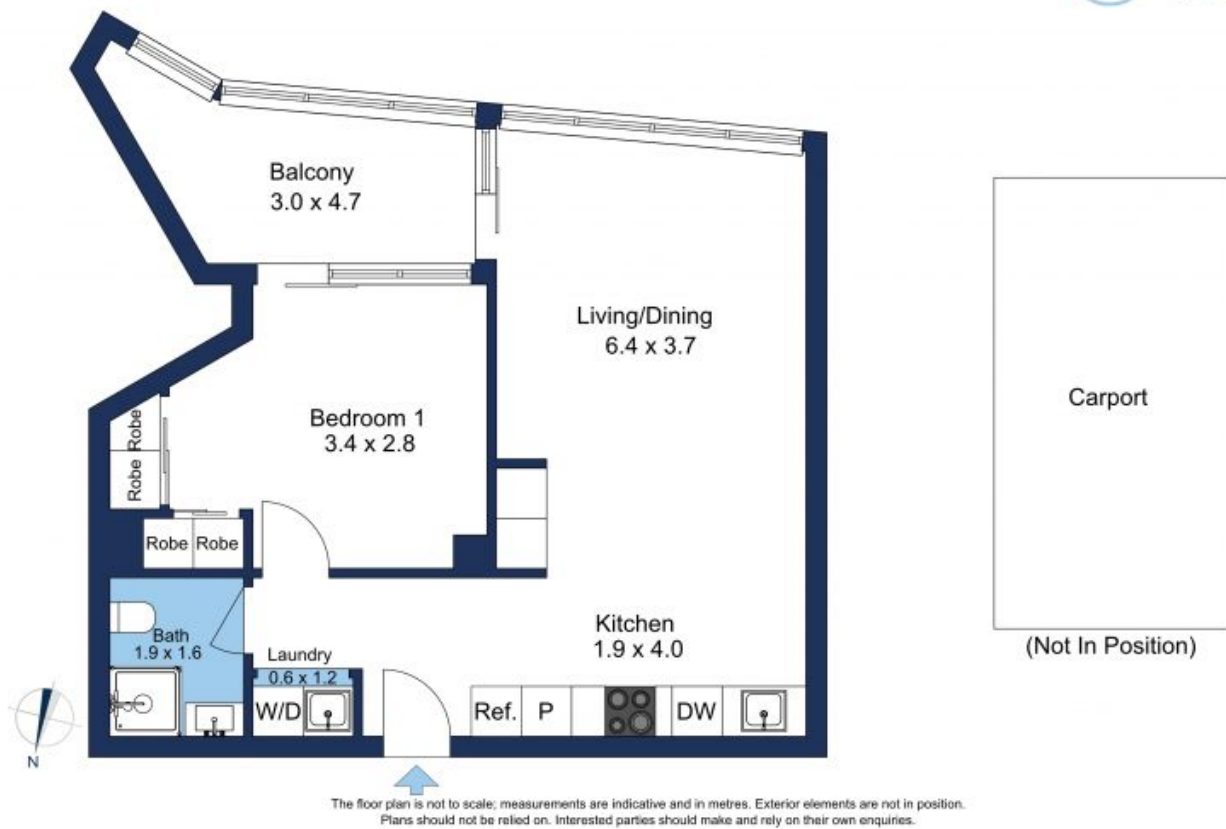
Council Rates: \$1,200/year (approx)

Contact: Andrew Chen
03 9645 1199
0490 816 861
Andrew Chen
03 9645 1199
0490 816 861

Type: Apartment

Sold Date: 19/01/2024

<https://www.resbymirvac.com>



Plans shown are only indicative of layout. Dimensions are approximate.

Docklands, VIC
1408/81 South Wharf Drive