



## Sydney Olympic Park, NSW

20906/2 Figtree Drive

**1** **1** **1**  
BED BATH CAR



### North Facing 1 Bedroom + Study Apartment in 'Pavilions' by Mirvac

Welcome to Pavilions in Sydney Olympic Park

Located in Sydney Olympic Park, you will find yourself within close proximity to an abundance of parklands, cafes, restaurants & bars, public transport and world-class sporting facilities. As a resident in Pavilions by Mirvac you will enjoy access to a gym, co-working space as well as a children's play area.

This 73sqm, 9th floor apartment features:

- Well-appointed bedroom with built-in wardrobes
- Separate study room, perfect for a home office or nursery

**\$700 per week | Deposit Taken!**

**Contact:**

Georgia Glynn

02 8588 8888

0481 388 777

Christine Howison

02 8588 8888

0459 222 085

**Type:**

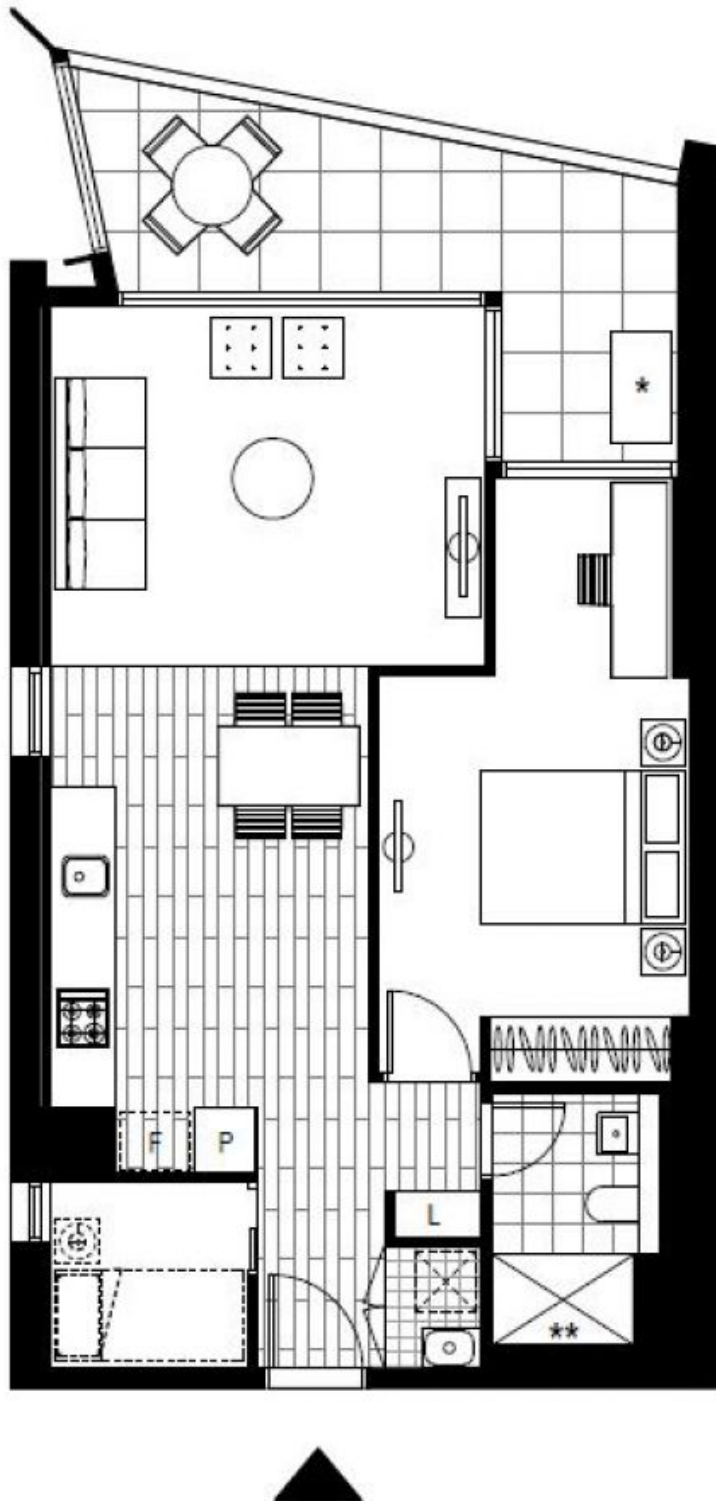
Apartment

**Date Available:** 30/09/2023

**Bond:**

\$2880

<https://www.resbymirvac.com>



Plans shown are only indicative of layout. Dimensions are approximate.

**Sydney Olympic Park, NSW**  
20906/2 Figtree Drive