

## Glebe, NSW

601/1 Cullen Close

**1** BED **1** BATH



### North-facing, Sunny and Oversized 1-Bedroom Apartment in Harold Park

Welcome to Harold Park, Glebe's Secret Backyard.

Here in Harold Park you will find yourself in an idyllic parkside location, with only a short walk to Glebe Foreshore. Just meters away, The Tramsheds retail precinct resides featuring cafes, a grocery store, restaurants and a medical centre.

This 62sqm, 6th level apartment offers;

- Large bedroom with a generous built-in wardrobe
- Modern galley kitchen with a stone benchtop and Miele appliances
- Sleek bathroom with plenty of storage

**\$750 per week | Deposit Taken**

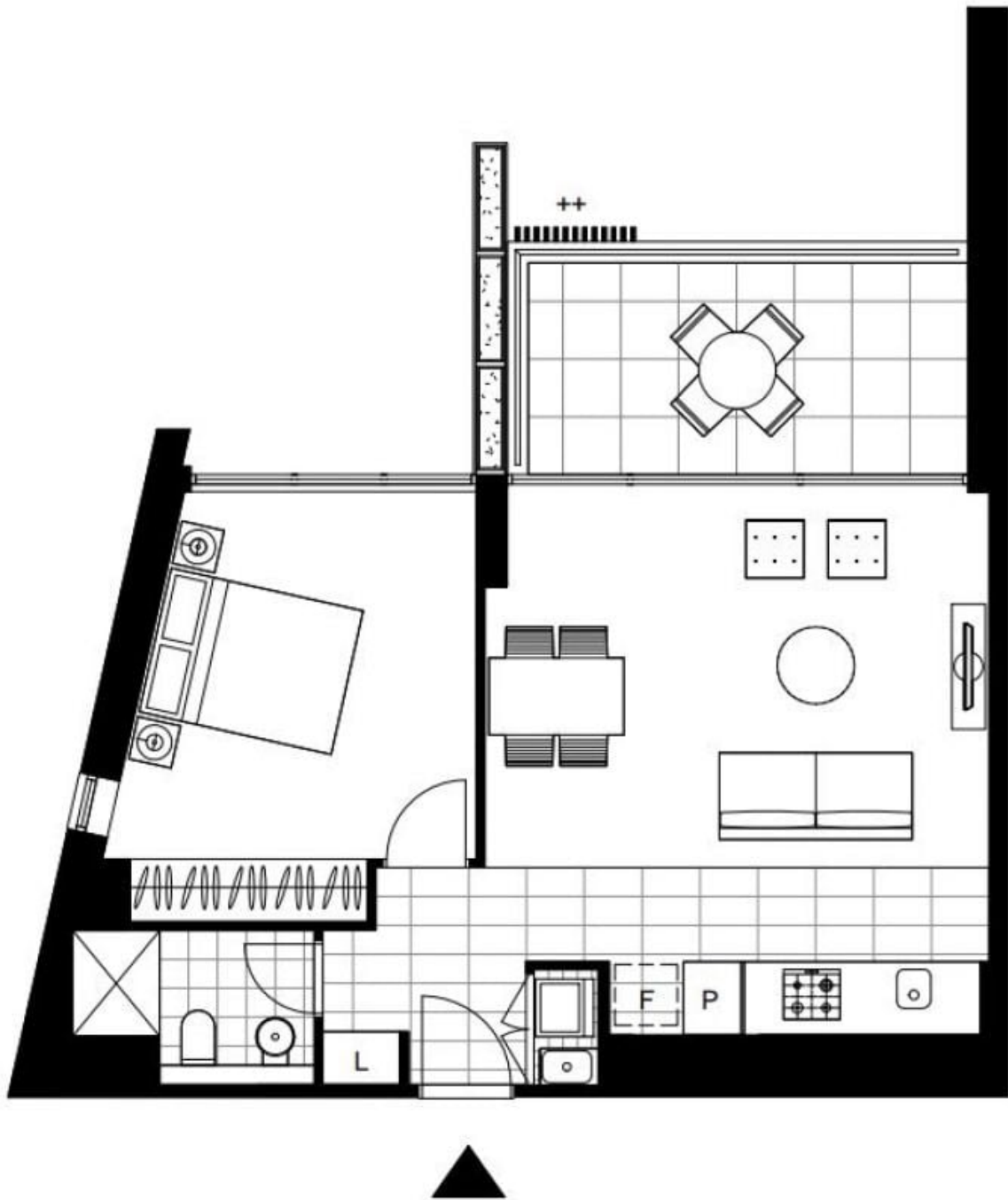
**Contact:** Naz Sabzpour  
02 8588 8888  
0401 545 440

**Type:** Apartment

**Date Available:** 29/09/2023

**Bond:** \$3000

<https://www.resbymirvac.com>



Plans shown are only indicative of layout. Dimensions are approximate.

**Glebe, NSW**  
601/1 Cullen Close