



Zetland, NSW
601/6 Ebsworth Street

1 BED **1** BATH



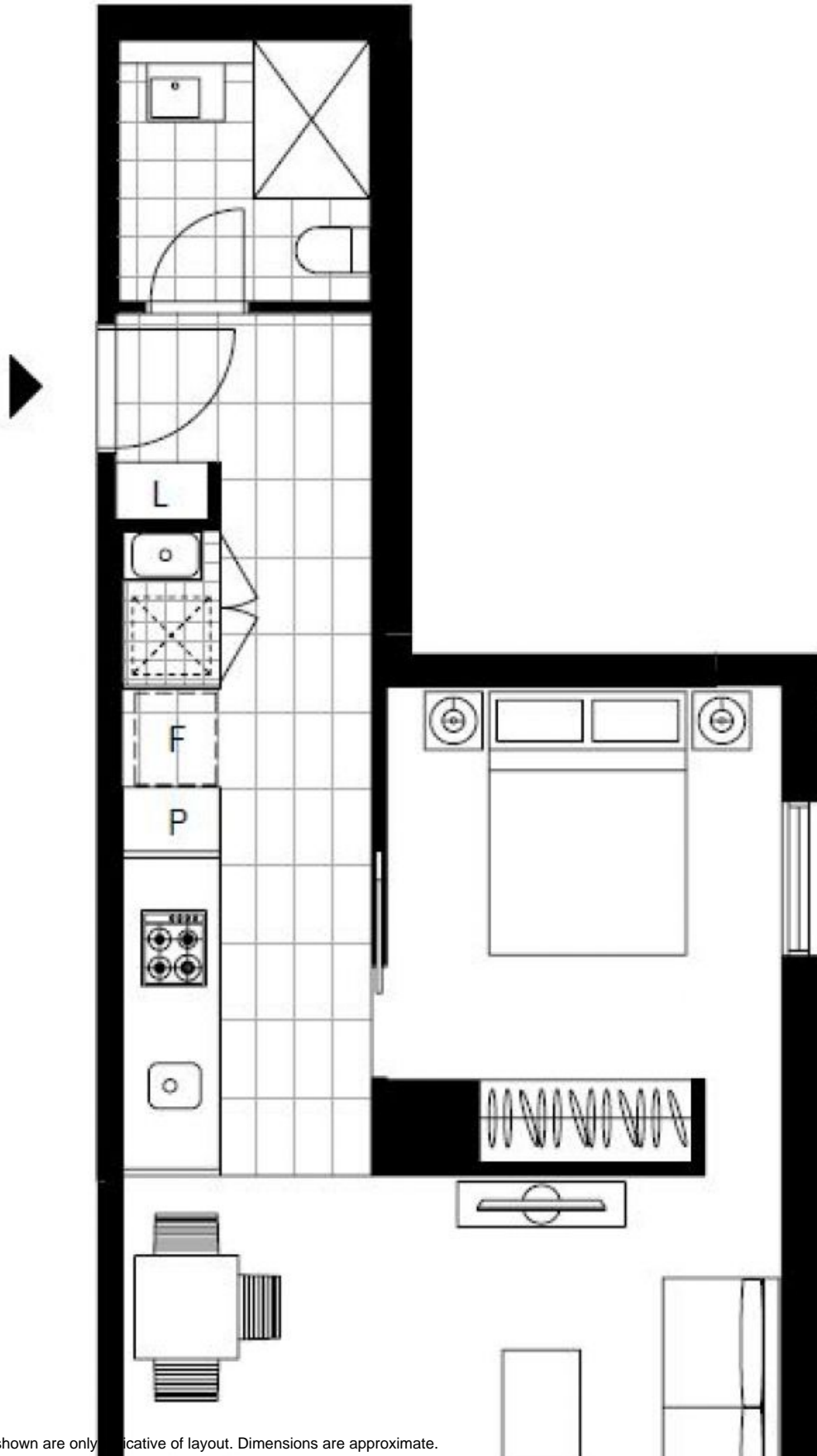
Great Investment | Contact Us For Potential Gross Yield

Welcome to the epitome of urban sophistication and modern living in the highly sought-after OVO Tower built and developed by Mirvac. Situated in the vibrant community of Green Square, this thoughtfully designed 1-bedroom apartment offers both style and comfort. The open plan layout is intelligently designed to ensure maximum privacy, with well-positioned windows and thoughtful architectural elements.

- ? Separation of kitchen area from living/dining room for convenience
- ? Upgraded splashback in the living room offering style
- ? Generously sized bedroom with built-in wardrobes for storage needs
- ? Stone kitchen, gas stainless steel Smeg appliances, dishwasher
- ? Fully tiled bathroom, internal laundry, ducted heating / cooling

Contact Agent

Council Rates: \$289/qtr (approx)
Strata Rates: \$698/qtr (approx)
Contact: Emma Symonds
 02 8588 8888
 0412 660 011
Type: Apartment
Land: 46Square Metres
<https://www.resbymirvac.com>



Plans shown are only indicative of layout. Dimensions are approximate.

Zetland, NSW
601/6 Ebsworth Street