



Glebe, NSW

13/1A The Crescent

3 BED **2** BATH **2** CAR 

Stylish 3-Bedroom Apartment in Harold Park

Welcome to Harold Park, Glebe's Secret Backyard.

Here in Harold Park you will find yourself in an idyllic parkside location, with only a short walk to Glebe Foreshore. Just meters away, The Tramsheds retail precinct resides featuring cafes, a grocery store, restaurants and a medical centre.

This ground-floor access unit offers:

- Three large bedrooms, all with built-in wardrobes
- Two bathrooms, with a bath in the ensuite
- Modern stone kitchen with integrated Miele appliances and island bench
- Spacious living & dining area, flowing onto the courtyard

\$1400 per week | Deposit Taken
2x Parking

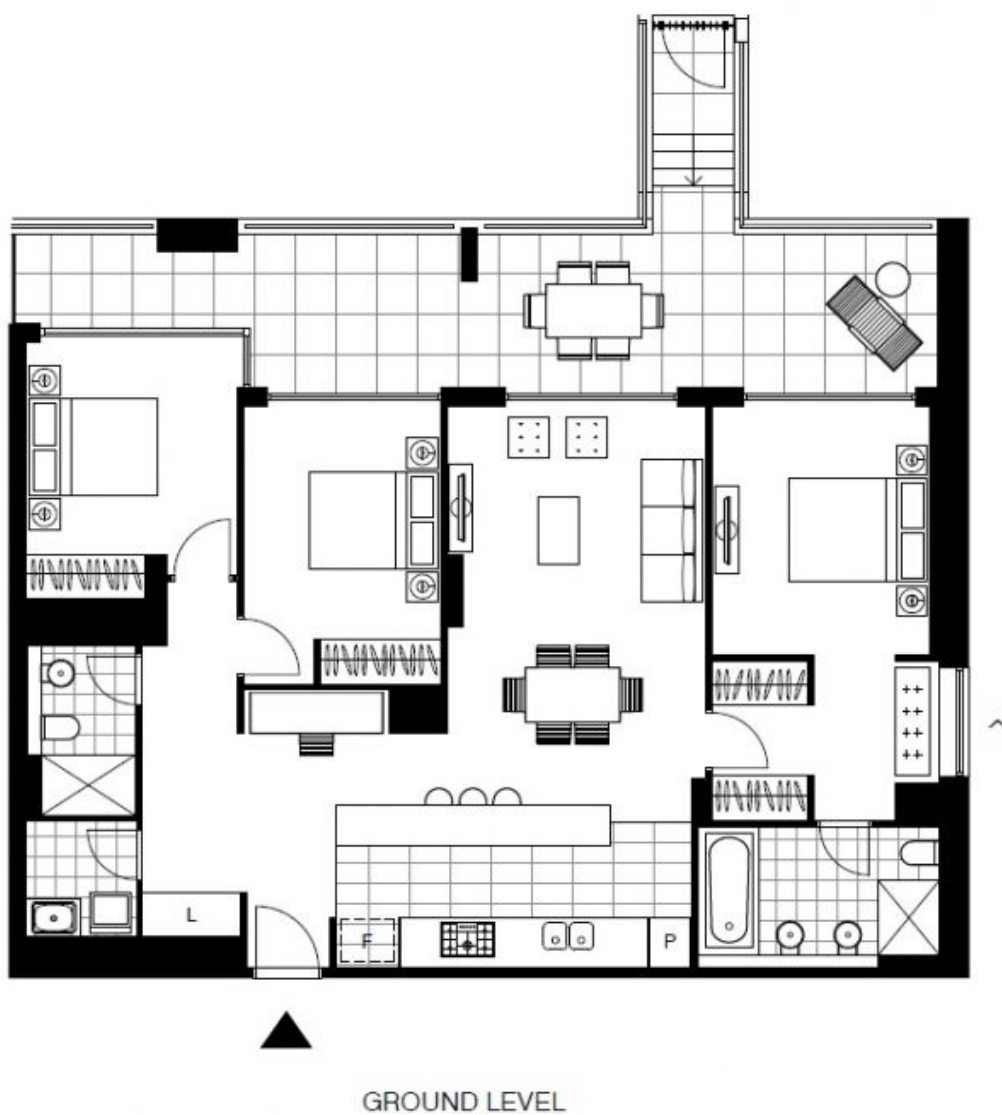
Contact: Naz Sabzpouri
02 8588 8888
0401 545 440

Type: Apartment

Date Available: 16/08/2023

Bond: \$5600

<https://www.resbymirvac.com>



Plans shown are only indicative of layout. Dimensions are approximate.

Glebe, NSW
13/1A The Crescent