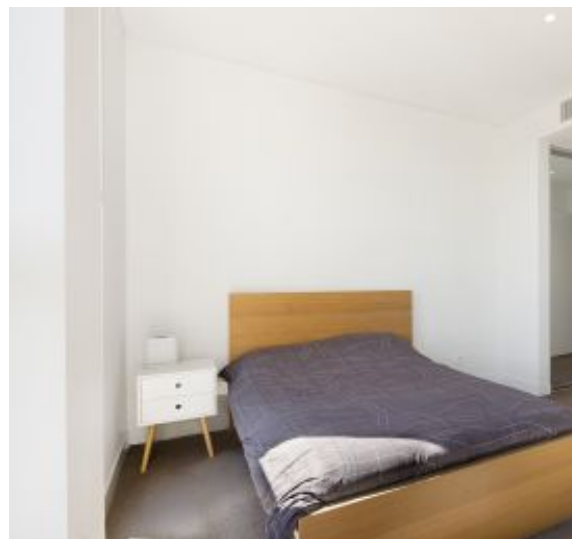




RES real estate services by mirvac



RES real estate services by mirvac



Sydney Olympic Park, NSW

10505/2a Figtree Drive

1 BED 1 BATH



Pristine contemporary elegance in sought-after locale

A unique lifestyle address, this apartment in the prized building 'The Pavilions' is an ideal base for executive singles or couples. It enjoys a peaceful, private and elevated position with leafy outlooks while showcasing the essence of sleek contemporary living. Enjoying a shared gym and BBQ area, it's a 5-minute stroll to greenspaces, walking tracks, aquatic centre, stadiums, eateries and rail.

- ? Gourmet open plan kitchen and roomy living/dining spaces
- ? Stone bench tops, sumptuous Smeg stainless steel appliances
- ? Inviting loggia-style balcony that's almost like another room
- ? Generous bedroom with built-in robe and balcony access
- ? Stylish fully tiled bathrooms, separate internal laundry facilities
- ? Ducted air conditioning with security entrance and lift access

Buyers Guide \$560,000 - \$590,000

Council Rates: \$304/qtr (approx)

Strata Rates: \$877/qtr (approx)

Contact: Emma Symonds
02 8588 8888
0412 660 011
Emma Symonds
02 8588 8888
0412 660 011

Type: Apartment

Sold Date: 27/09/2023

Land: 59Square Metres

<https://www.resbymirvac.com>



The floor plan is not to scale; measurements are indicative and in metres. All features included in this 3D plan are for inspiration purposes only. This is not an exact replica of the property or the position of exterior elements. Plans should not be relied on. Interested parties should make and rely on their own enquiries.

Plans shown are only indicative of layout. Dimensions are approximate.

Sydney Olympic Park, NSW
10505/2a Figtree Drive