



Docklands, VIC
1302/60 Lorimer Street

2 BED **1** BATH **1** CAR



Light filled two bedroom apartment in the heart of Yarra's Edge

Welcome to Yarra's Edge, Docklands' most prestigious riverside community.

Here in Yarra's Edge you will find yourself in an perfectly positioned waterfront location, only moments away from an array of cafes, restaurants, parks, Yarra's Edge promenade and IGA supermarket.

This 2 Bedroom, 1 Bathroom, 1 Car Space apartment features;
Northern aspect overlooking the Yarra's Edge marina and city skyline
Open plan living and dining experience flowing to balcony
Sizeable kitchen with island bench and ample storage
Integrated dishwasher and s/steel appliances

\$630 per week

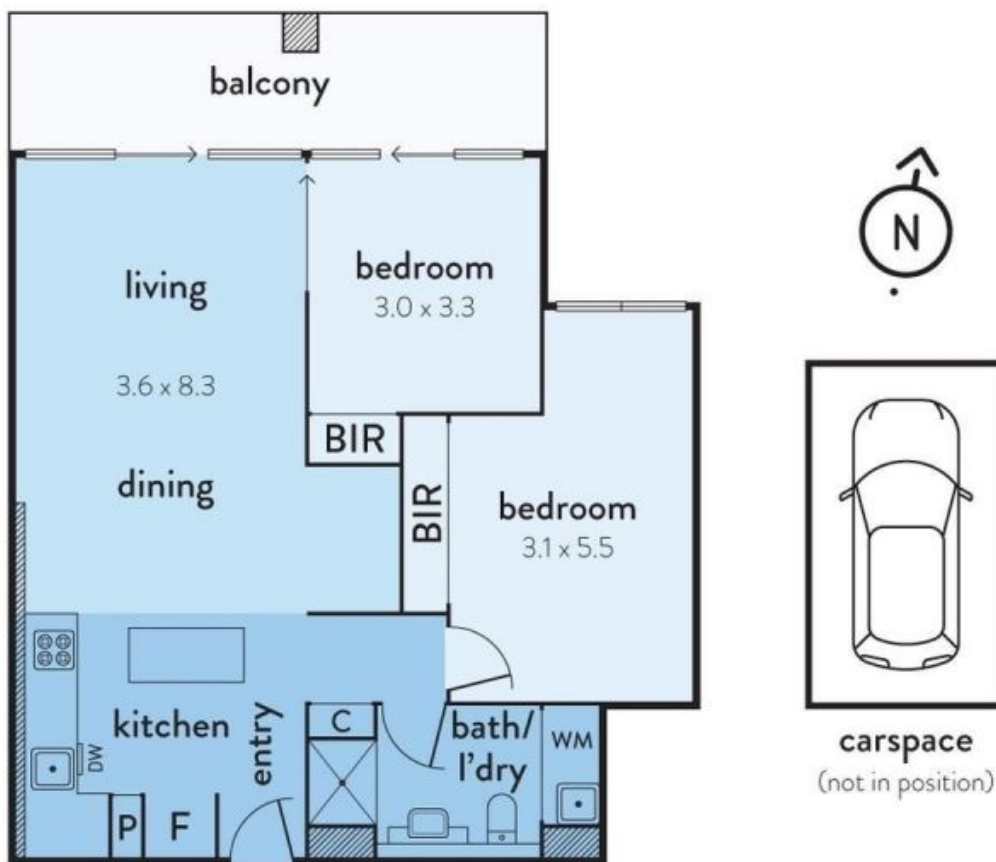
Contact: Aleisha Clark
03 9645 1199
0491 174 507
Anthony Yau
0396451199
0408 527 174

Type: Apartment

Date Available: 07/07/2023

<https://www.resbymirvac.com>

1302/60 LORIMER STREET, DOCKLANDS



real estate
services
by mirvac

Plans shown are only indicative of layout. Dimensions are approximate.

The above plan is an artist's impression only, it includes elements that are for display purposes and may not be to scale. Dimensions are approximate and every care has been taken to verify the accuracy of details.

Docklands, VIC
1302/60 Lorimer Street