



## Docklands, VIC

1302/60 Lorimer Street

**2**  
BED

**1**  
BATH

**1**  
CAR



### Light filled two bedroom apartment in the heart of Yarra's Edge

Welcome to Yarra's Edge, Docklands' most prestigious riverside community.

Here in Yarra's Edge you will find yourself in an perfectly positioned waterfront location, only moments away from an array of cafes, restaurants, parks, Yarra's Edge promenade and IGA supermarket.

This 2 Bedroom, 1 Bathroom, 1 Car Space apartment features;  
Northern aspect overlooking the Yarra's Edge marina and city skyline  
Open plan living and dining experience flowing to balcony  
Sizeable kitchen with island bench and ample storage  
Integrated dishwasher and s/steel appliances

**\$630 per week**

**Contact:**

Aleiasha Clark  
03 9645 1199  
0491 174 507  
Anthony Yau  
0396451199  
0408 527 174

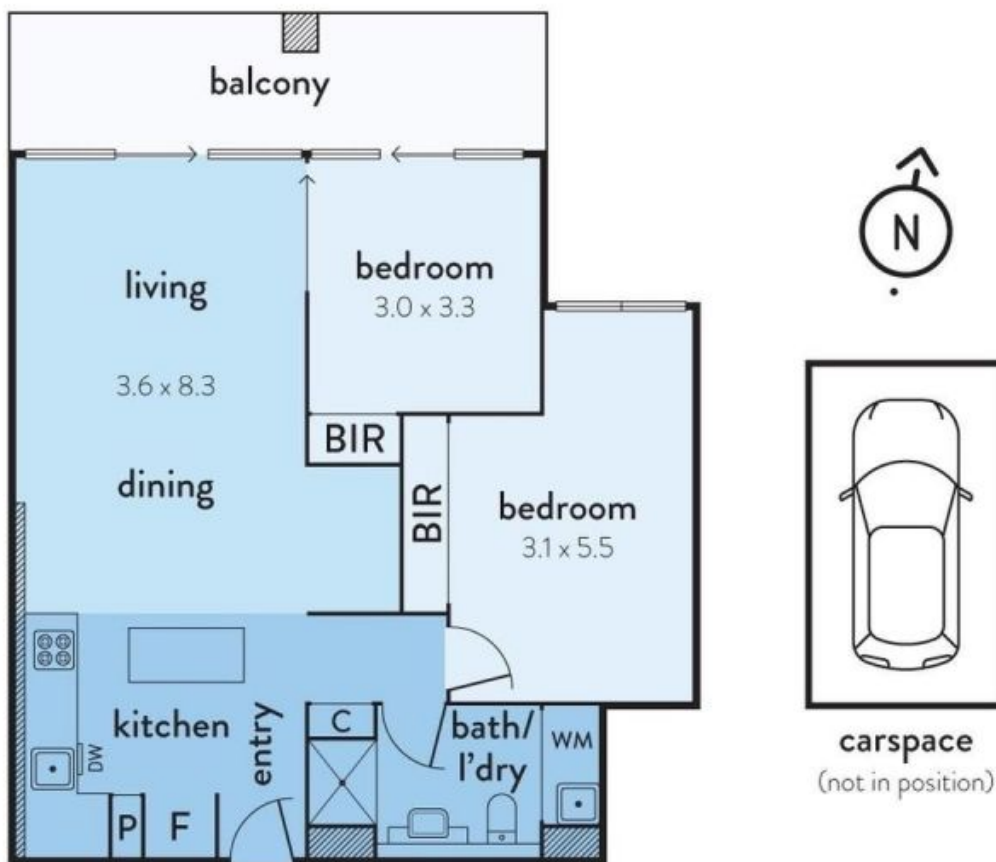
**Type:**

Apartment

**Date Available:** 07/07/2023

**<https://www.resbymirvac.com>**

# 1302/60 LORIMER STREET, DOCKLANDS



real estate  
services  
by mirvac

Plans shown are only indicative of layout. Dimensions are approximate.

The above plan is an artist's impression only, it includes elements that are for display purposes and may not be to scale. Dimensions are approximate and every care has been taken to verify the accuracy of details.

**Docklands, VIC**  
1302/60 Lorimer Street