



Zetland, NSW
2009/6 Ebsworth Street

2
BED

1
BATH



Stylish sky-home at a cosmopolitan address near Green Square

Boasting a southerly aspect and soaking in the sunshine via its floor-to-ceiling windows, this apartment is a sleek and stylish sky-home. It enjoys pleasant urban outlooks from its 20th floor position while offering a roomy in/outdoor design. A popular city-fringe lifestyle, it encourages an active social life ideal for those who love shopping, dining and cultural activities.

- ? Spacious living/dining room flowing to a covered balcony
- ? Stone kitchen, gas stainless steel Miele cooking appliances
- ? Generous master bedroom with built-in robes, fully tiled bathroom
- ? Internal laundry, ducted air conditioning, security entrance, lift access
- ? Stylish neutral colour palette and ducted air conditioning

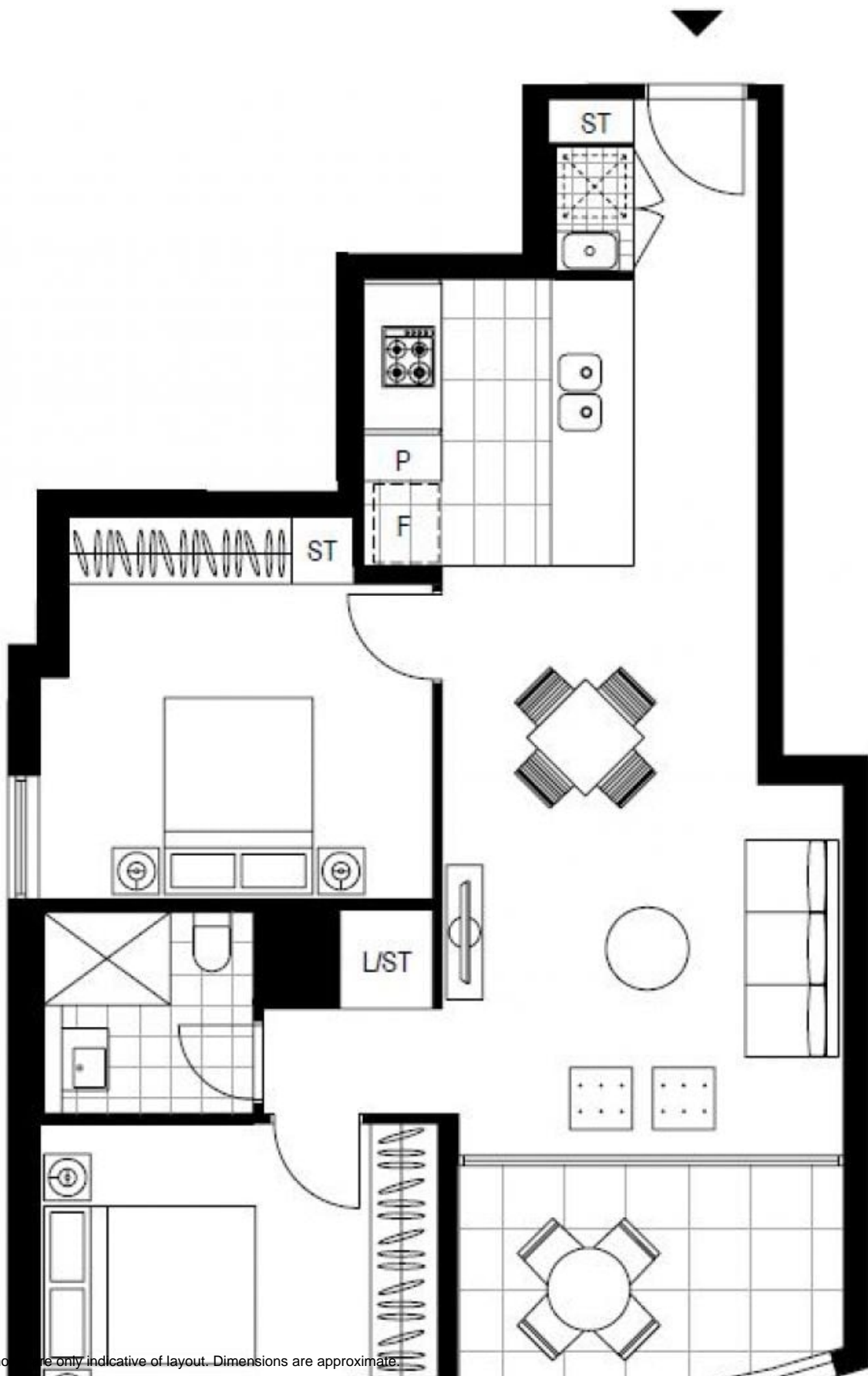
DEPOSIT TAKEN

Contact: Kevin Tam
02 8588 8888
0481735222
Carmen Whiteley
02 8588 8888
0497 555 519

Type: Apartment

Date Available: 16/06/2023

<https://www.resbymirvac.com>



Plans shown are only indicative of layout. Dimensions are approximate.

Zetland, NSW
2009/6 Ebsworth Street