



St Leonards, NSW
509/472 Pacific Highway

2 BED **2** BATH **1** CAR



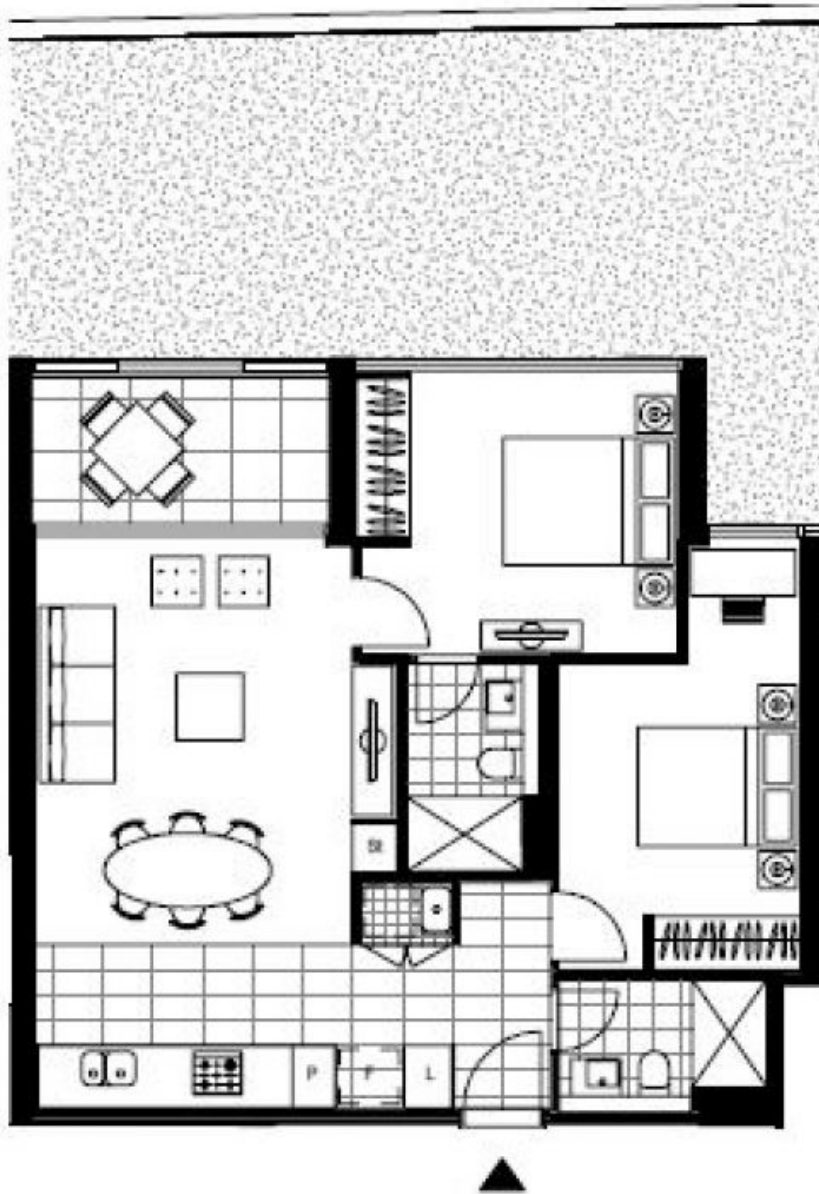
Great Investment | Contact Us For Potential Gross Yield

An exquisite two-bedroom, two-bathroom apartment offering a coveted urban lifestyle within the prestigious Mirvac's St Leonards Square. This exceptional residence presents a harmonious blend of contemporary elegance, superior craftsmanship, and unrivalled convenience, complemented by a dedicated car space and a storage cage.

- ? Enjoy stunning day and night views through floor-to-ceiling glass windows.
- ? The open plan kitchen seamlessly flows into the living and dining area
- ? Sleek stone benchtops and stainless-steel Miele appliances
- ? Generously proportioned bedrooms with built-in robes with one tiled ensuite

For Sale \$1,300,000

Council Rates: \$359/qtr (approx)
Strata Rates: \$1,402/qtr (approx)
Contact: Emma Symonds
 02 8588 8888
 0412 660 011
Type: Apartment
Land: 75Square Metres
<https://www.resbymirvac.com>



LEVEL 5

Plans shown are only indicative of layout. Dimensions are approximate.

St Leonards, NSW
509/472 Pacific Highway